

Disinfection Guide for Scanner Tips

Cautions

1. Before EACH use, the scanner tip must be disinfected and (or) sterilized.
2. The scanner tip is of medium-danger, and should be sterilized or disinfected at high level.
3. Take protective measures when disinfecting the scanner tip in the disinfection liquid.

Operation Steps

1. After intraoral scanning, separate the scanner tip and the scanner body. Put the scanner tip in the instrument tray.
2. Clean the scanner tip: Wipe the tip with a piece of alcohol gauze or CaviWipes.
3. Ensure there is no damage to the scanner tip and the tip has been cleaned thoroughly.

High-level disinfection with ortho-phthalaldehyde

1. Wear gloves before performing disinfection operation.
2. Separate the scanner tip and the scanner body.
3. Pre-clean the scanner tip.
4. Put ortho-phthalaldehyde in a cup. The liquid should completely cover the scanner tip (5.5 g/L, pH 7.0-8.0, 20-25°C).

Note:

If the frequency of recycled disinfection is not high, one barrel of the ortho-phthalaldehyde can be used for up to 14 days (the concentration should be higher than 0.3%).

5. The scanner tip should be immersed for 12-30 mins.
6. Clean the scanner tip carefully with distilled water.
7. Dry the scanner tip with lint-free cloth thoroughly to ensure it's totally dry.

Disinfection Guide for Scanner Tips

Cautions

1. Before EACH use, the scanner tip must be disinfected and (or) sterilized.
2. The scanner tip is of medium-danger, and should be sterilized or disinfected at high level. The scanner tip is consumable. After disinfecting the tip under high temperature and air pressure for 100 times, discard it and use a new one.

Operation Steps

1. After intraoral scanning, separate the scanner tip and the scanner body. Put the scanner tip in the instrument tray for later cleaning.
2. Clean the scanner tip: Wipe the tip with a piece of alcohol gauze or CaviWipes to ensure its totally dry—inside and outside. See Figure 1.
3. Fold the gauze into a strip similar to the scanner tip size. See Figure 2.
4. Fill the lens with gauze. See Figure 3.
5. Seal the tip into the sterilization bag (see Figure 4) and put the bag into the autoclave.
6. Set autoclave parameters: 134°C, relative pressure 205.8 kPa and 4 mins; or 121°C, relative pressure 102.9 kPa and 30 mins. Implement the step in vacuum.



Figure 1



Figure 2

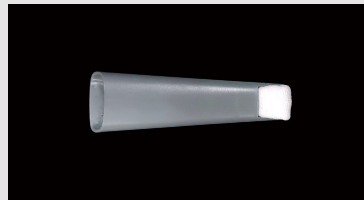


Figure 3



Figure 4