

Solid Abutment Procedure for Tissue Level Implant



Blue Sky Bio

Solid Abutment Procedure for Tissue Level Implant



Cover screw in place







Choose matching abutment

Solid Prosthetics Regular Platform 5.5mm		Solid Prosthetics Wide Platform 5.5mm	
Image	Part #	Image	Part #
	KRT0055		KWT0055
	AR5500		AW5500
	MSR5500		MSW5500
	BAR5500		BAW5500
	WIRK4800		WIWK6500
Solid Prosthetics Regular Platform 4.0mm		Solid Prosthetics Wide Platform 4.0mm	
Image	Part #	Image	Part #
	KRT0040		KWT0040
	AR4000		AW4000
	MSR4000		MSW4000
	BAR4000		BAW4000
	WIRK4800		WIWK6500
Solid Prosthetics Regular Platform 7.0mm			
Image	Part #		
	KRT0070		
	AR7000		
	MSR7000		
	BAR7000		
	WIRK4800		

The presentation that follows lists only one combination of parts. Obviously the clinical situation may call for substitution of another part on this slide



Solid Abutment Procedure for Tissue Level Implant

	Size	Part #
	Torque/Ratchet Wrench	TR-900-01
	Thumbwheel/ITI Wrench Adapter	ITI-Adapter
	.048 Hex Driver short	SDS048
	.048 Hex Driver long	SDL048

Prosthetic instruments needed

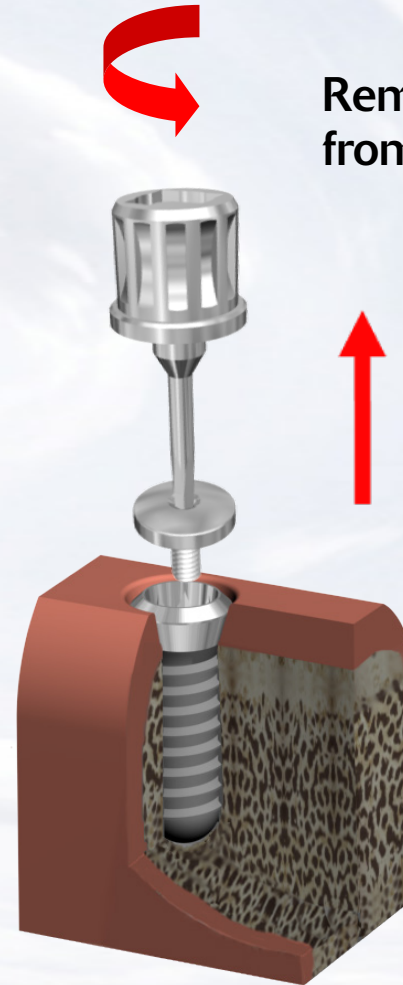
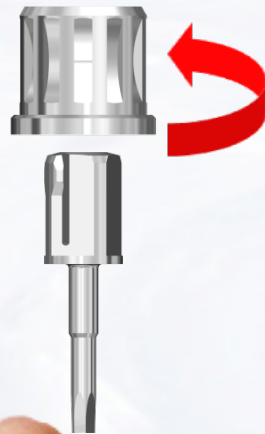


Blue Sky Bio

Solid Abutment Procedure for Tissue Level Implant

Assemble screw driver with ITI - Adapter (thumb-wheel / adapter)

Insert assembled screw driver into cover screw and turn counter clockwise



Remove cover screw from implant



Blue Sky Bio

Solid Abutment Procedure for Tissue Level Implant



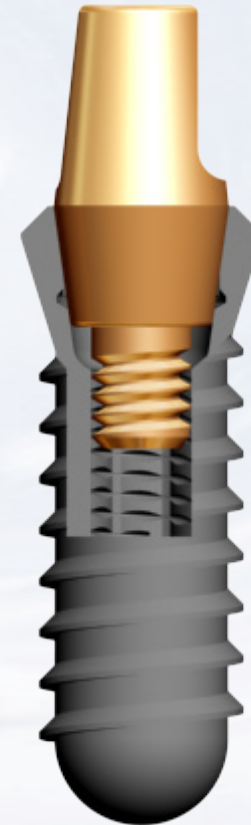
8 degree Morse taper on the outside of the abutment
Matches the 8 degree Morse taper within the implant



Top view of Regular 4.0mm abutment with .048 hex.



Side view of Regular 4.0mm abutment



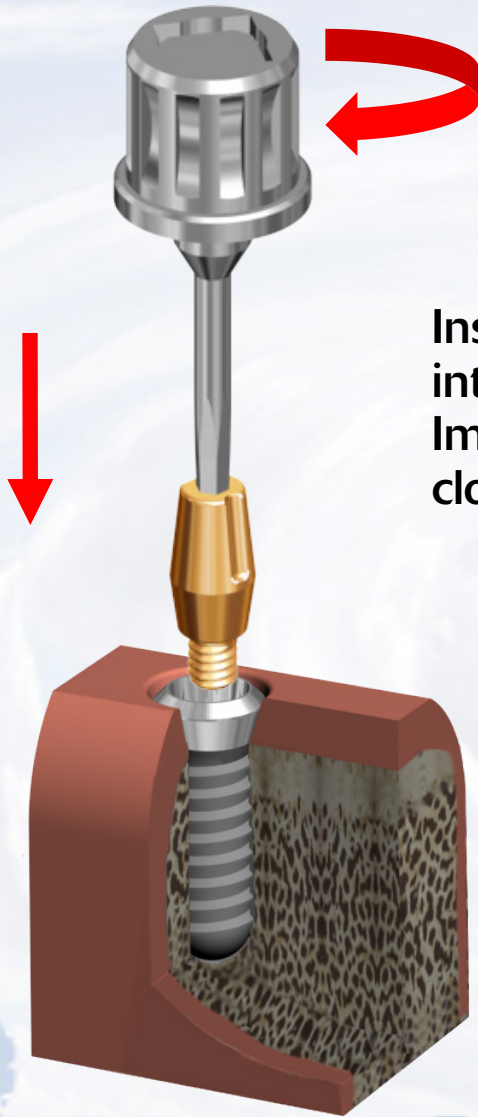
Screw the solid abutment into the implant at 30-35 Ncm

The Morse taper will lock the abutment in place.

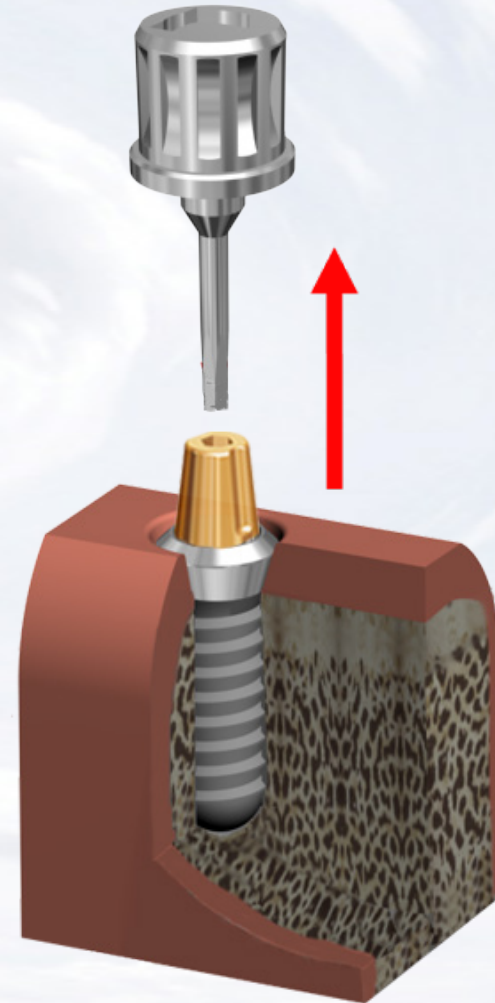


Blue Sky Bio

Solid Abutment Procedure for Tissue Level Implant



Insert the abutment into the One Stage Implant and rotate clockwise until snug



Remove the screwdriver assembly



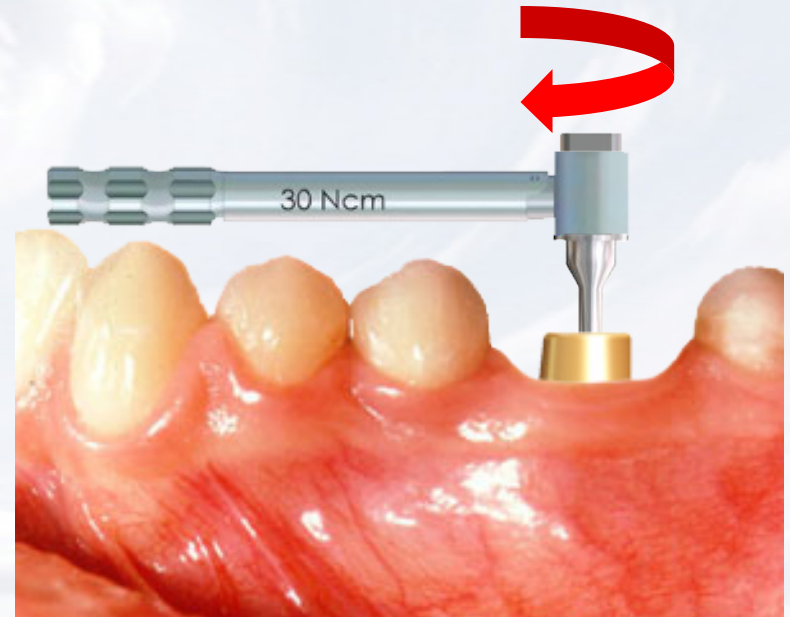
Blue Sky Bio

Solid Abutment Procedure for Tissue Level Implant



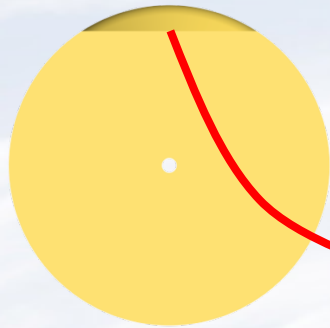
Insert the Hex Driver within the 30Ncm torque ratchet

Insert driver into abutment and turn torque ratchet clockwise until torque of 30 Ncm is reached and the head of the ratchet releases

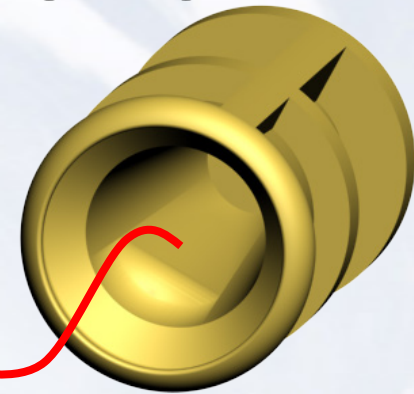


Blue Sky Bio

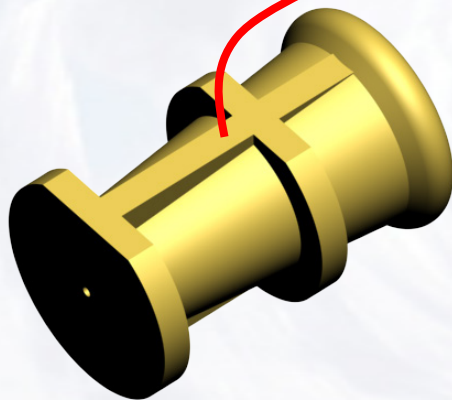
Solid Abutment Procedure for Tissue Level Implant



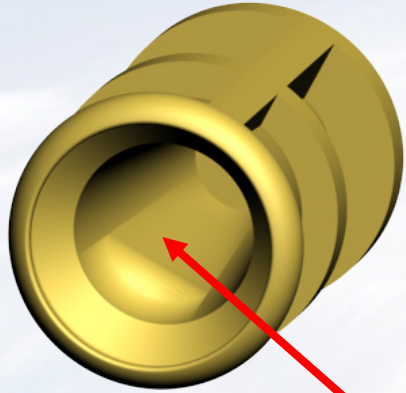
Plastic impression cap has a flat side



The flat side within the impression cap matches the flat side of the abutment



Solid Abutment Procedure for Tissue Level Implant



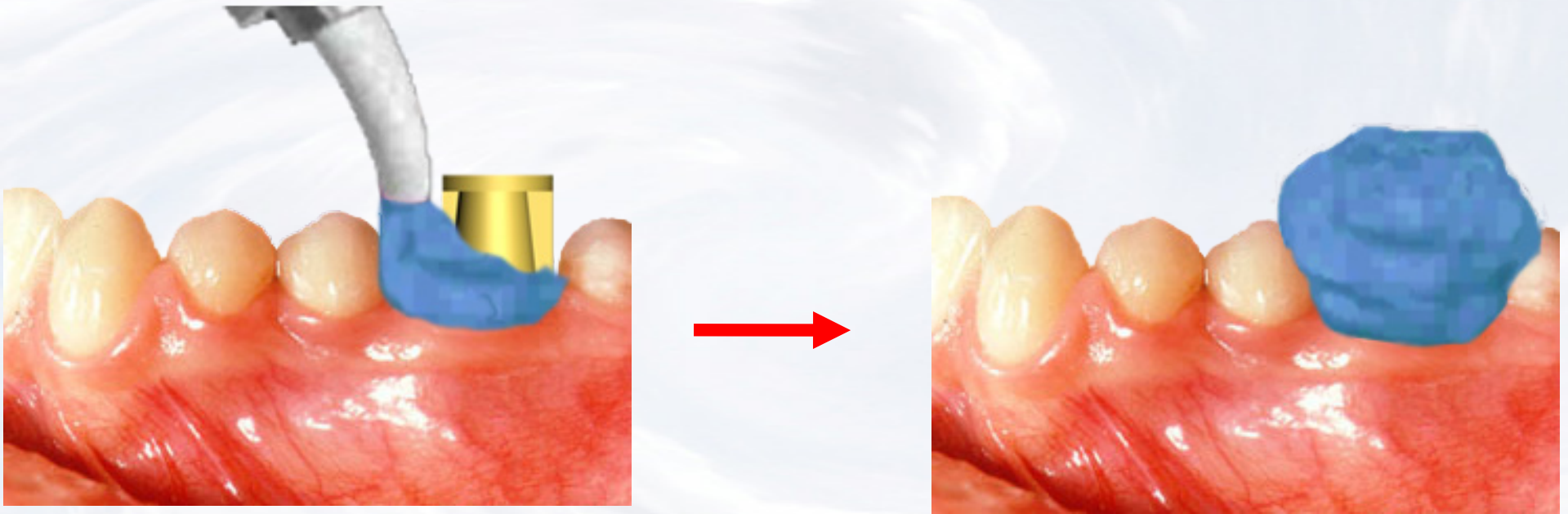
Make sure to align the flats within the abutment with the internal flat surface of the impression cap

Bevel on the impression cap should snap over the bevel on the implant



Blue Sky Bio

Solid Abutment Procedure for Tissue Level Implant

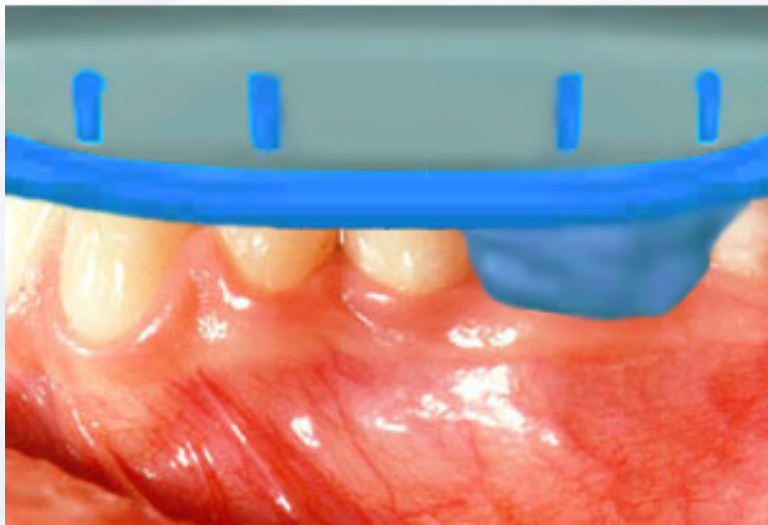


Inject impression material around the impression transfer

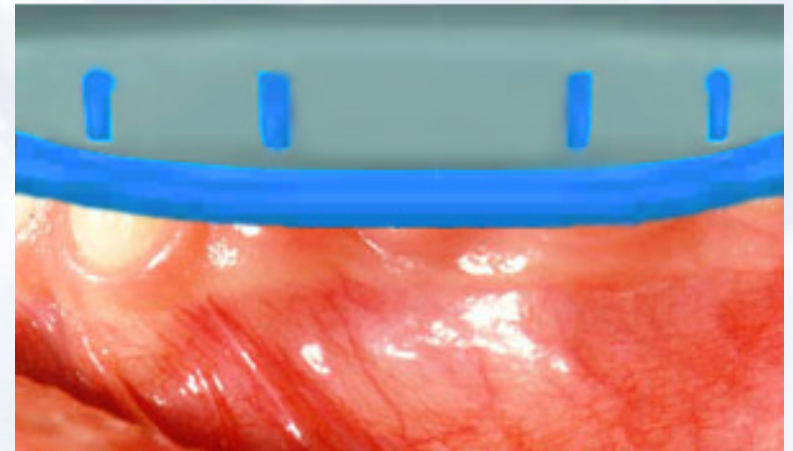
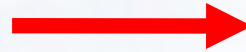


Blue Sky Bio

Solid Abutment Procedure for Tissue Level Implant



Insert tray with impression material

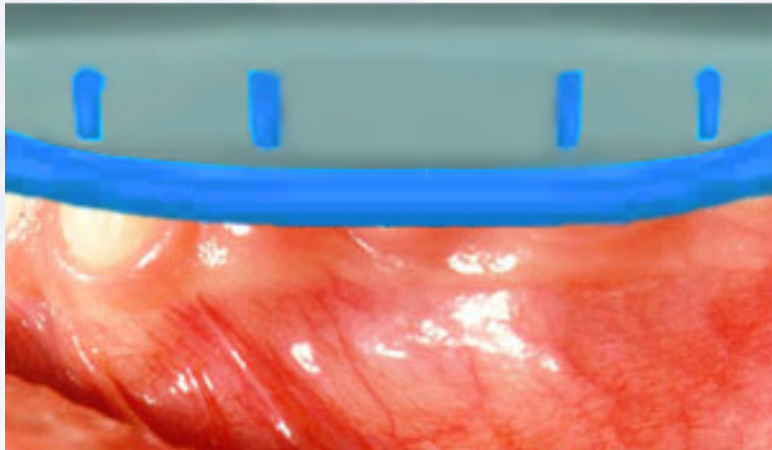


Seated impression to capture dental arch

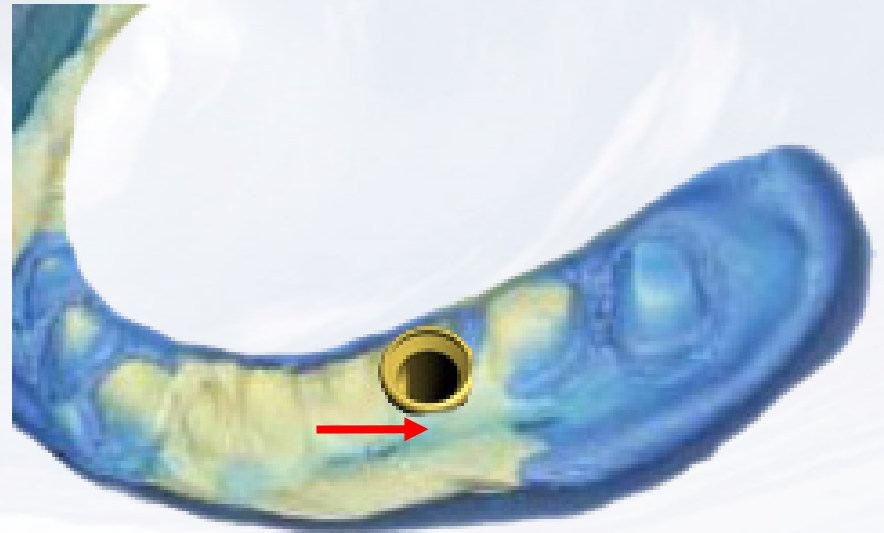
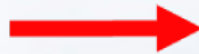


Blue Sky Bio

Solid Abutment Procedure for Tissue Level Implant



Remove the impression from the mouth when material has set



The impression cap will be removed with the impression tray.



Blue Sky Bio

Solid Abutment Procedure for Tissue Level Implant

Seat the temporary coping over the abutment and cut to appropriate height



Use a crown form to reline over the temporary coping to create a custom provisional restoration



Blue Sky Bio

Solid Abutment Procedure for Tissue Level Implant

The laboratory abutment analog is inserted into the plastic impression coping

Make sure to match the flat side on the abutment analog to the flat of the impression



Impression snap is captured and picked up within the impression



Blue Sky Bio

Solid Abutment Procedure for Tissue Level Implant



Apply soft tissue replica material around abutment level analog

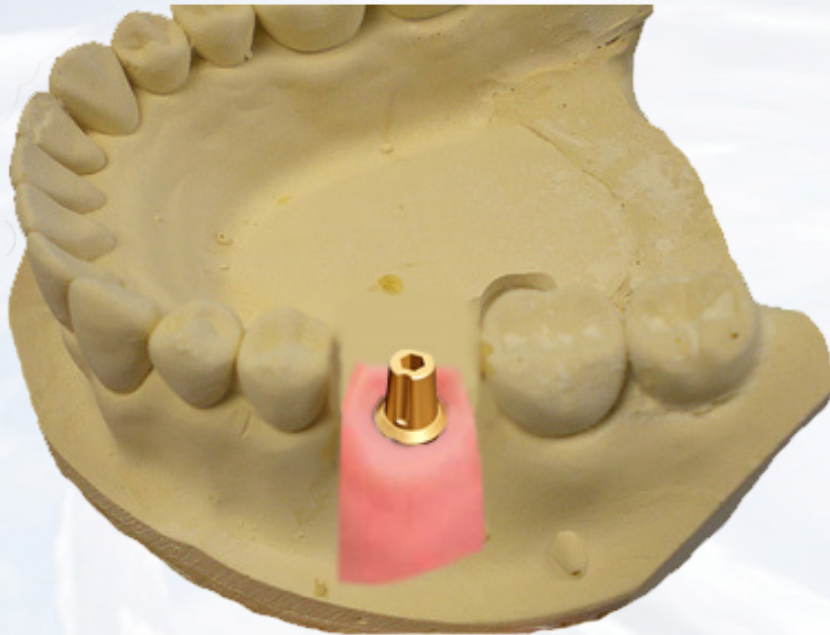


Pour dental stone Straight into the impression

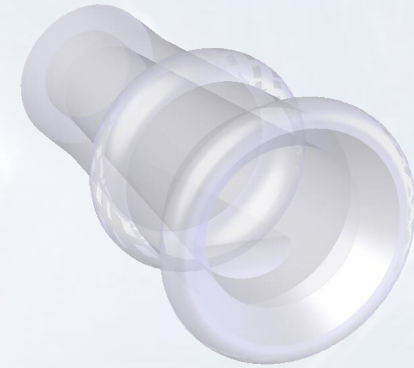


Blue Sky Bio

Solid Abutment Procedure for Tissue Level Implant



The completed dental stone model with the solid abutment analog in place



Engaging waxing sleeve (clear) has an internal flat side to match the flat side on the abutment analog



Blue Sky Bio

Solid Abutment Procedure for Tissue Level Implant

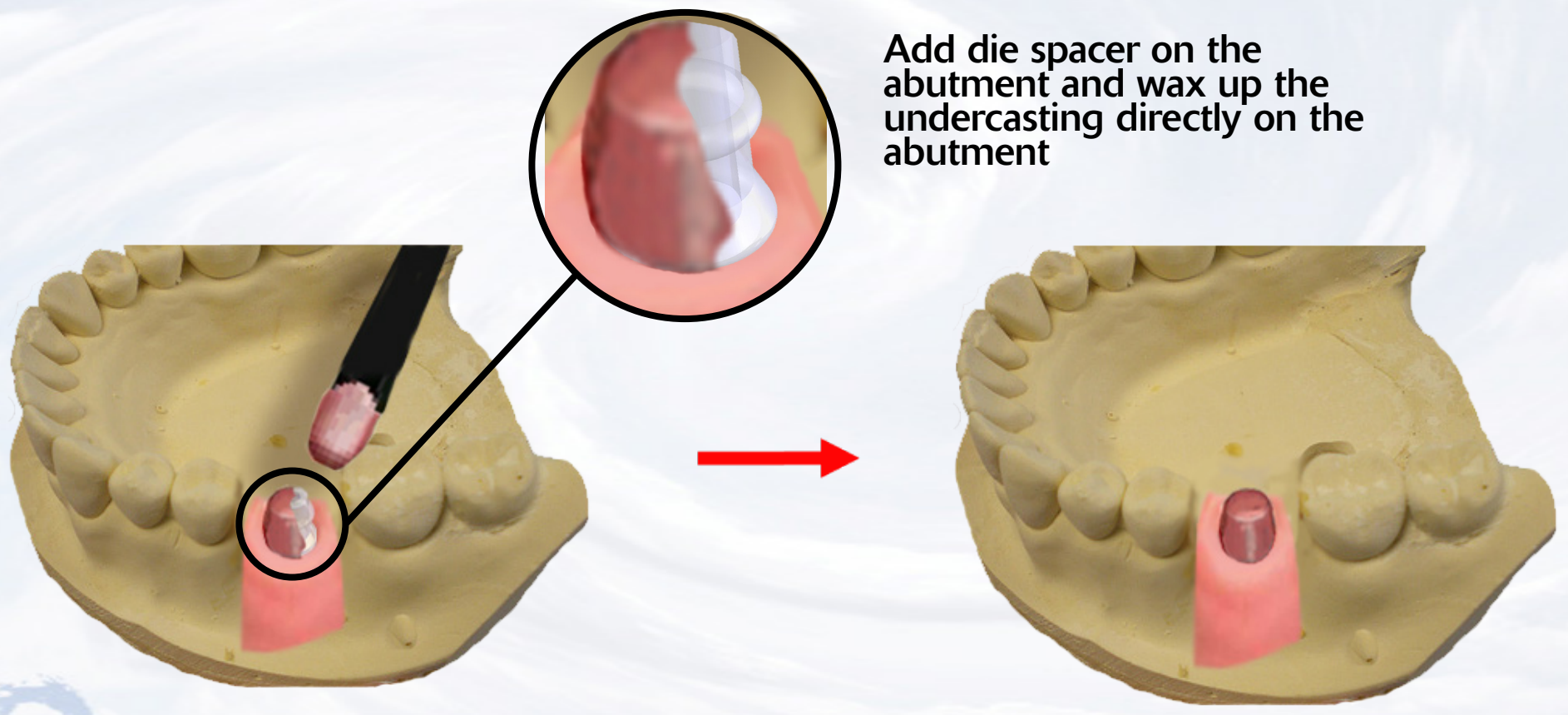
Make sure to align the flats of the engaging wax sleeve with the flats of the solid abutment analog

Apply engaging waxing sleeve (clear) for a single crown, Non-engaging waxing sleeve (white) for a splinted multi-unit case



Blue Sky Bio

Solid Abutment Procedure for Tissue Level Implant

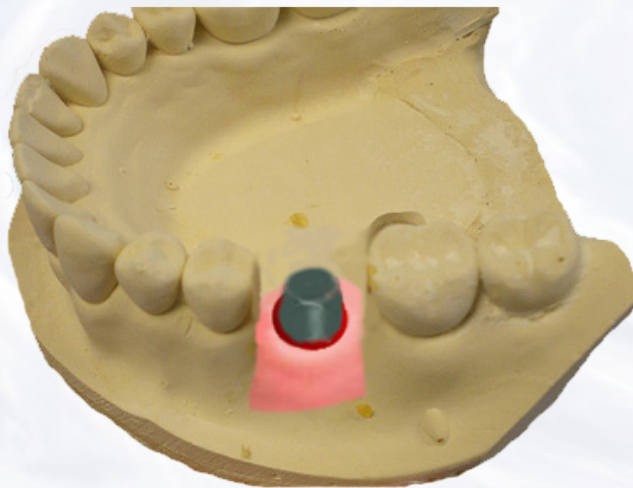


Add die spacer on the abutment and wax up the undercasting directly on the abutment

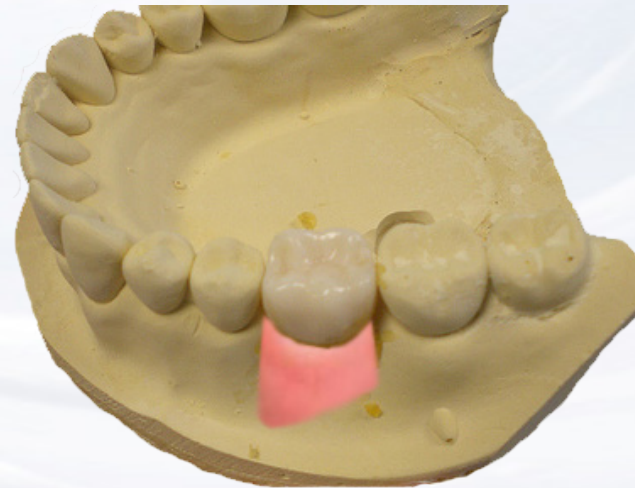


Solid Abutment Procedure for Tissue Level Implant

Cast wax up in usual manner and complete the metal casting



Stack and fire the ceramic in the usual manner and complete the restoration



Blue Sky Bio

Solid Abutment Procedure for Tissue Level Implant

Use permanent cement to place final crown



Blue Sky Bio