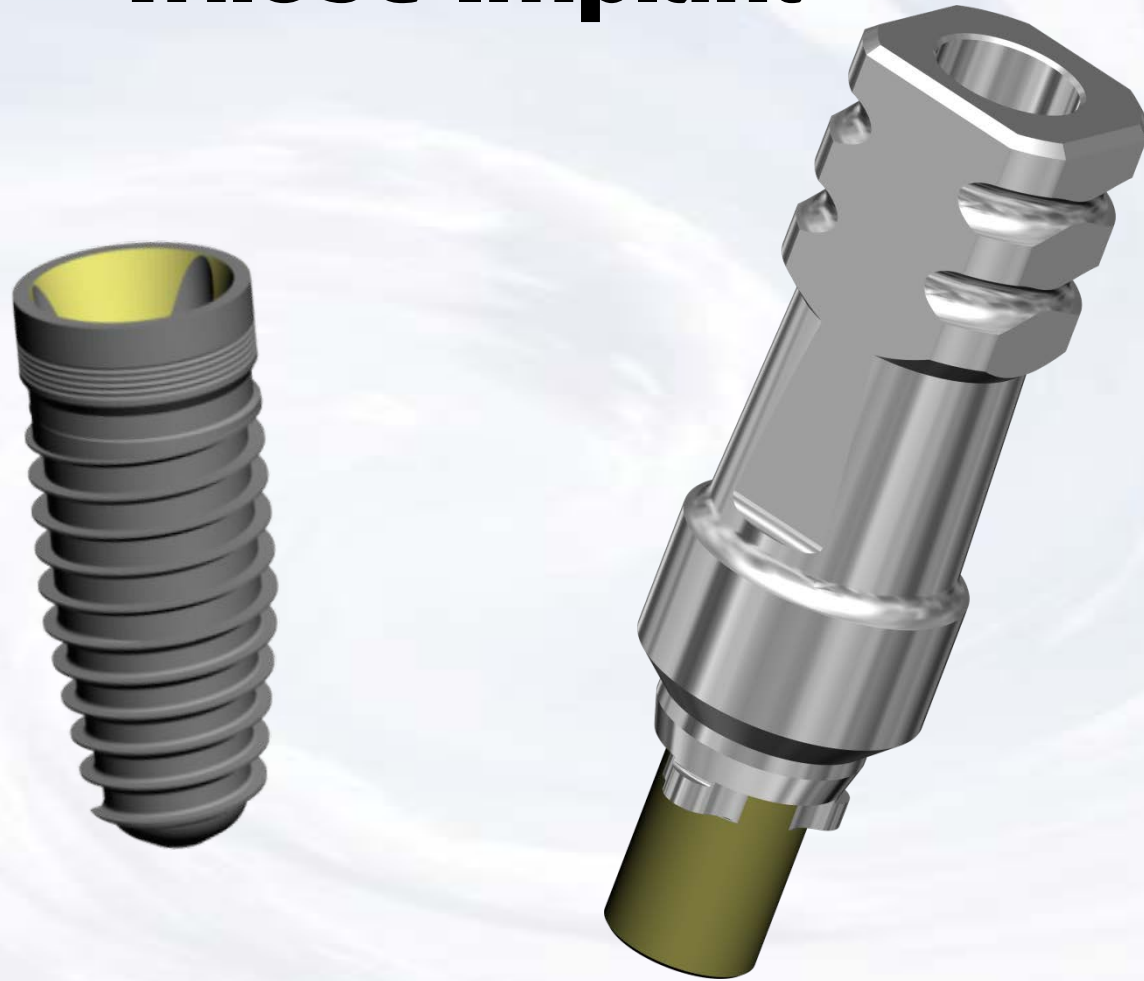


# Custom Millable Abutment for Trilobe Implant



**Blue Sky Bio**

# Custom Millable Abutment for Trilobe Implant



The Trilobe Conical Abutment functions as both the implant level impression coping and the final abutment



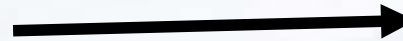
**Blue Sky Bio**

# Custom Millable Abutment for Trilobe Implant



Healing abutment in place

The presentation that follows lists only one combination of parts  
Obviously the clinical situation may call for substitution of another part on this slide



Choose matching abutment

**5.0 mm Abutments**

| Size                     | Part #  |
|--------------------------|---------|
| 5.0 Conical Abutment Kit | KAT5070 |
| 5.0 Conical Abutment     | ATT5070 |
| 5.0 Implant Level Analog | BITT50  |

**4.3 mm Abutments**





| Size                     | Part #  |
|--------------------------|---------|
| 4.3 Conical Abutment Kit | KAT4370 |
| 4.3 Conical Abutment     | ATT4370 |
| 4.3 Implant Level Analog | BITT43  |

**3.5 mm Abutments - Coming Soon!**

| Size                     | Part #  |
|--------------------------|---------|
| 3.5 Conical Abutment Kit | KAT3570 |
| 3.5 Conical Abutment     | ATT3570 |
| 3.5 Implant Level Analog | BITT35  |



# Custom Millable Abutment for Trilobe Implant

|   | Size                   | Part #    |
|---|------------------------|-----------|
|  | Torque/Ratchet Wrench  | TR-900-01 |
|  | Adapter for NB Ratchet | NA        |
|  | .048 Hex Driver short  | SDS048    |
|  | .048 Hex Driver long   | SDL048    |

Prosthetic instruments needed

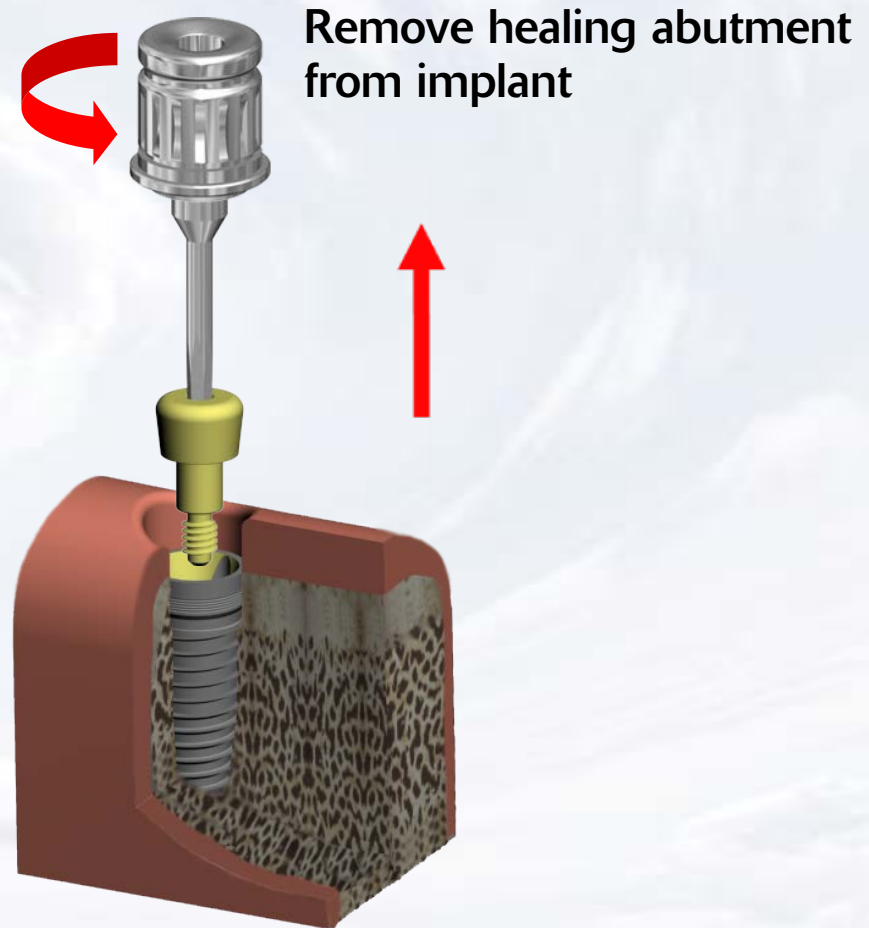


**Blue Sky Bio**

# Custom Millable Abutment for Trilobe Implant

Assemble screw driver with  
Ratchet Adapter

Insert assembled screw driver  
into cover screw



Blue Sky Bio

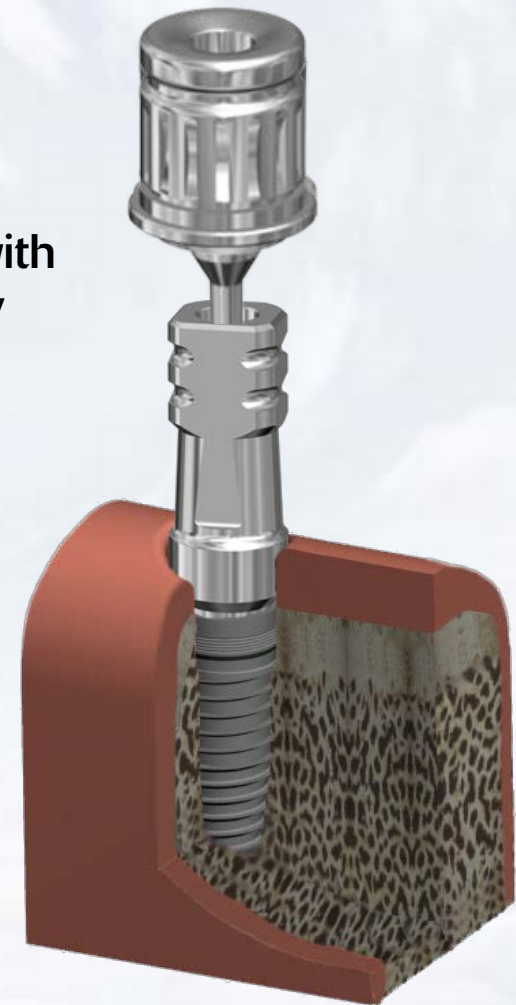
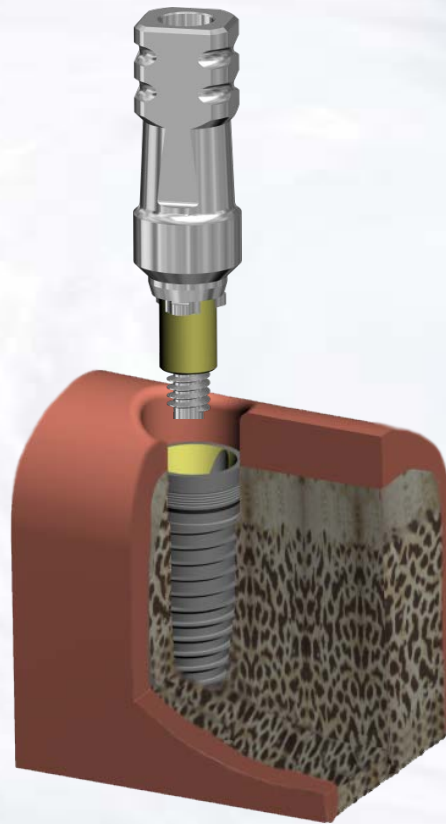
# Custom Millable Abutment for Trilobe Implant

Seat abutment into implant by  
aligning the lobes of the abutment  
with the lobes of the implant

Insert screw into  
abutment

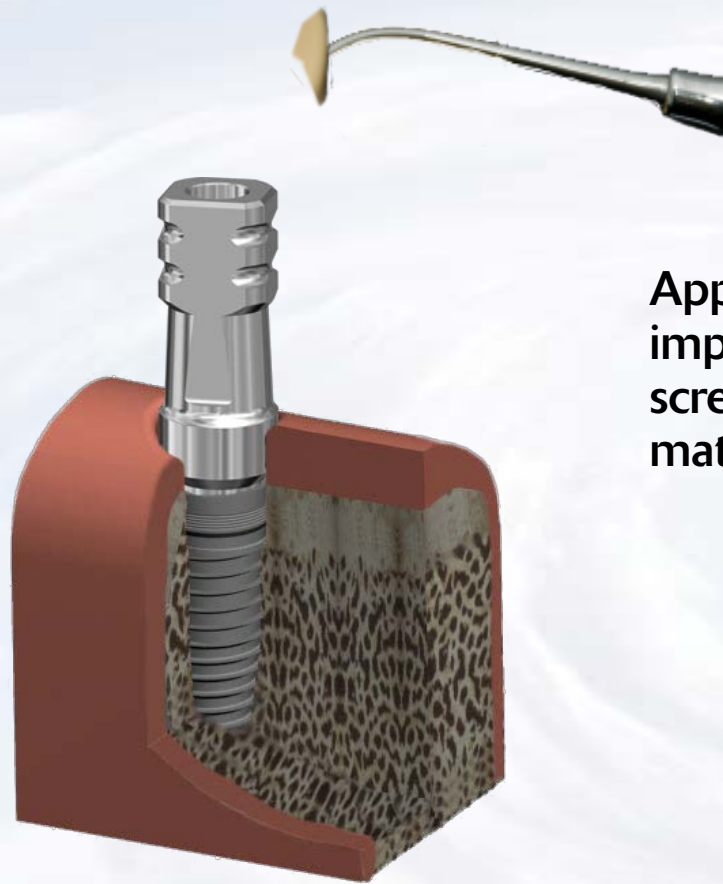


Tighten screw with  
finger force only

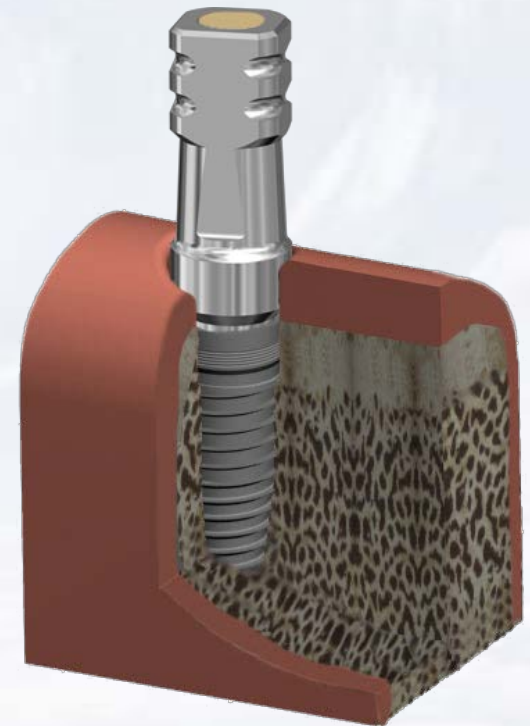


Blue Sky Bio

# Custom Millable Abutment for Trilobe Implant

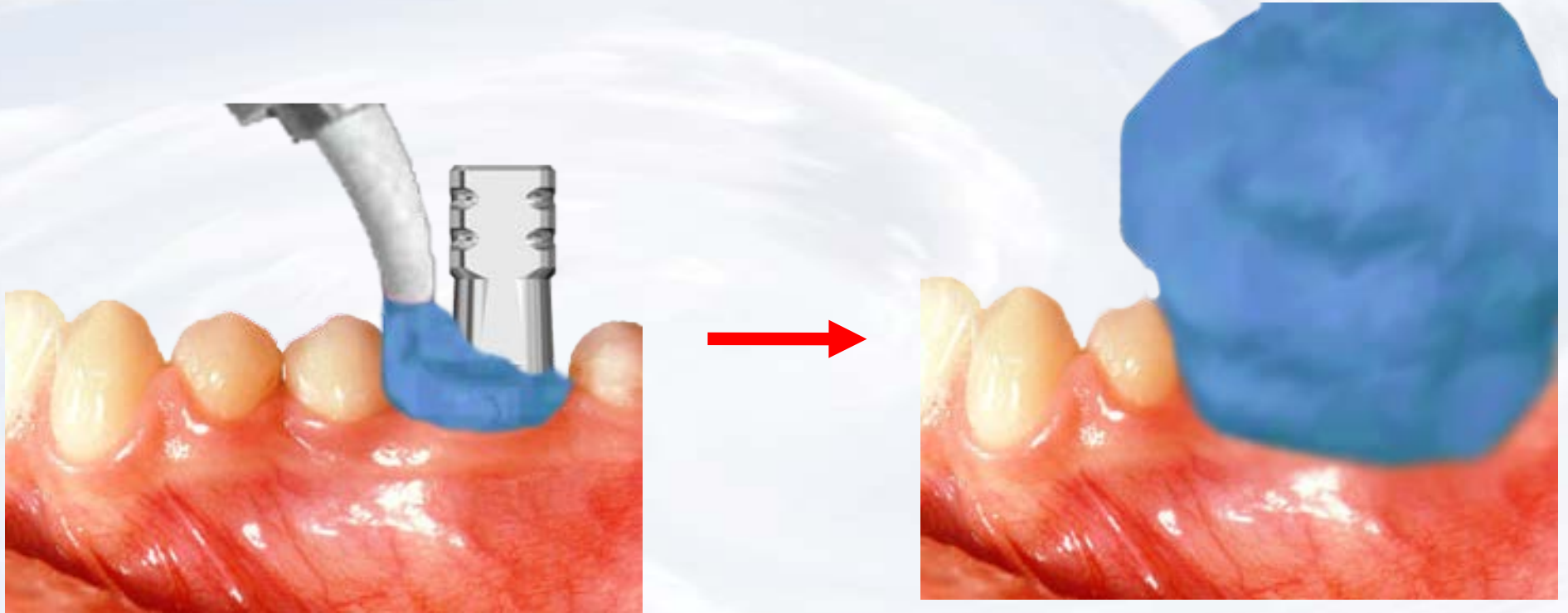


Apply wax to the top of the  
impression transfer to seal  
screw access to keep impression  
material out of the access hole



Blue Sky Bio

# Custom Millable Abutment for Trilobe Implant



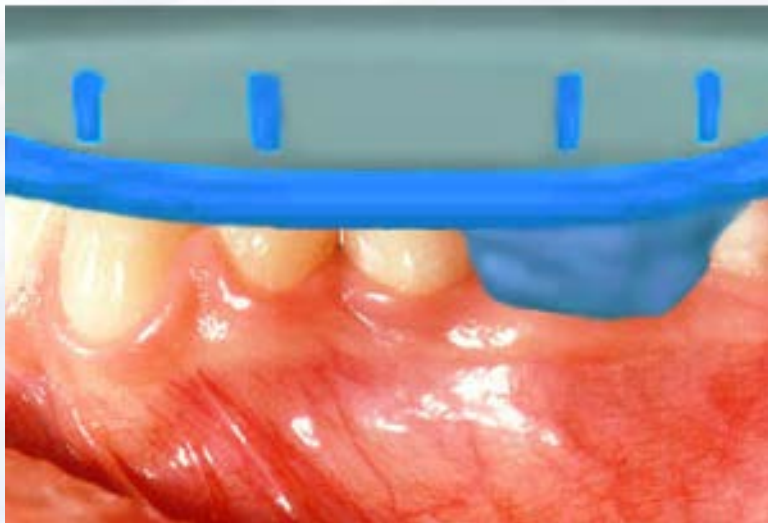
Inject impression material around the abutment



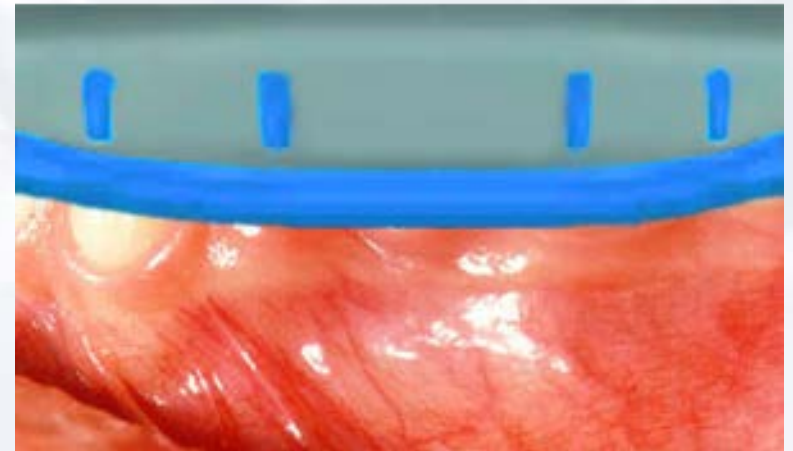
**Blue Sky Bio**



# Custom Millable Abutment for Trilobe Implant



Insert tray with impression material

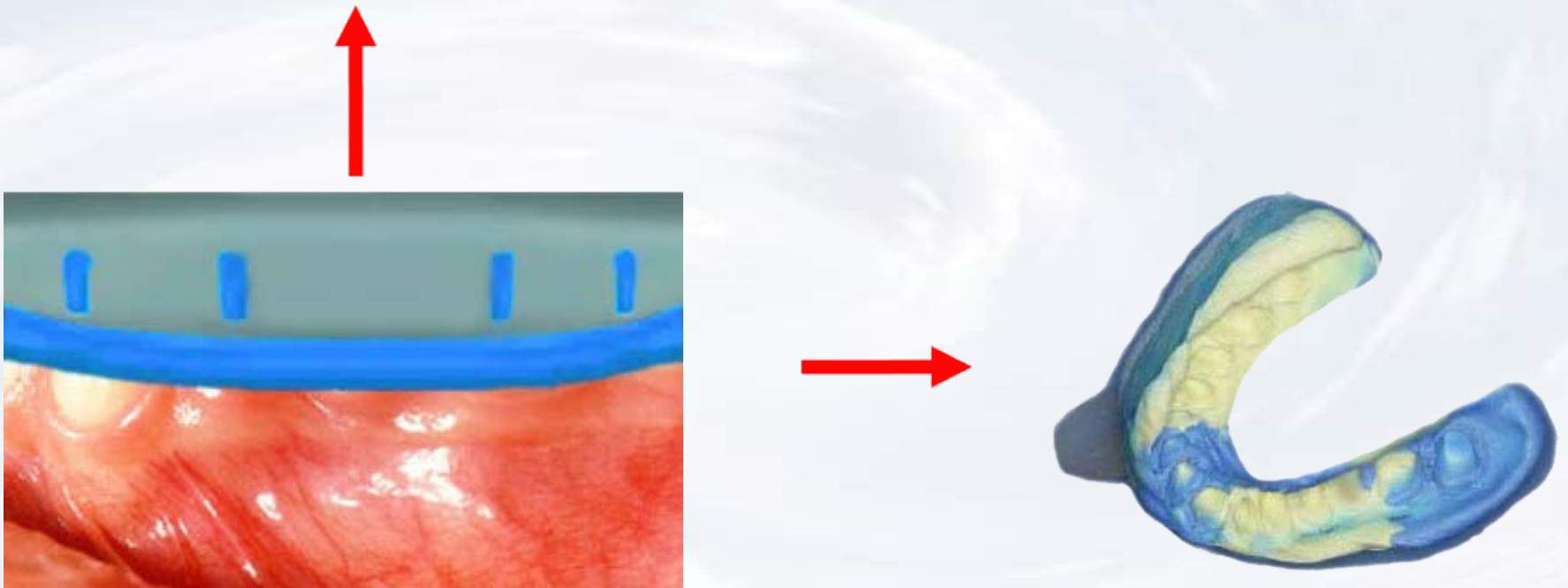


Seat impression to  
capture dental arch



**Blue Sky Bio**

# Custom Millable Abutment for Trilobe Implant



Remove the impression from the mouth when material has set



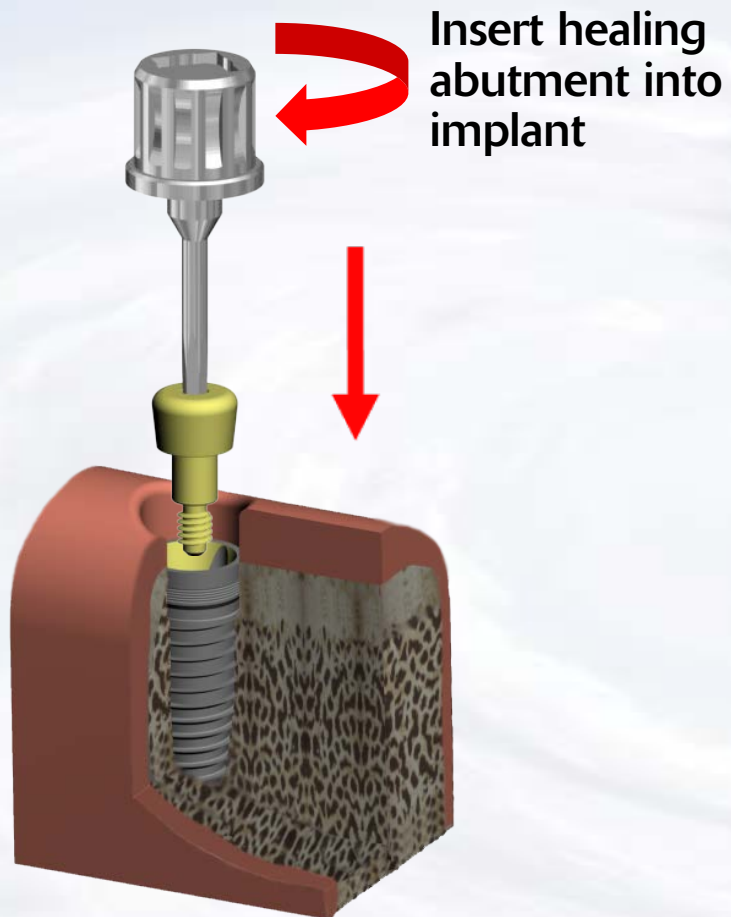
**Blue Sky Bio**

# Custom Millable Abutment for Trilobe Implant



Blue Sky Bio

# Custom Millable Abutment for Trilobe Implant



Healing abutment in place



Blue Sky Bio

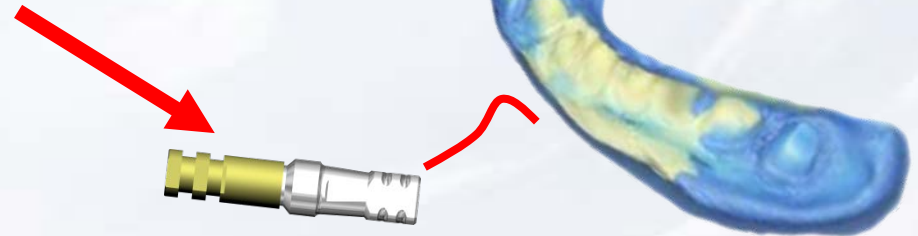
# Custom Millable Abutment for Trilobe Implant



Insert conical abutment into implant level analog and tighten fixation screw with finger pressure



Assembled conical abutment with implant level analog



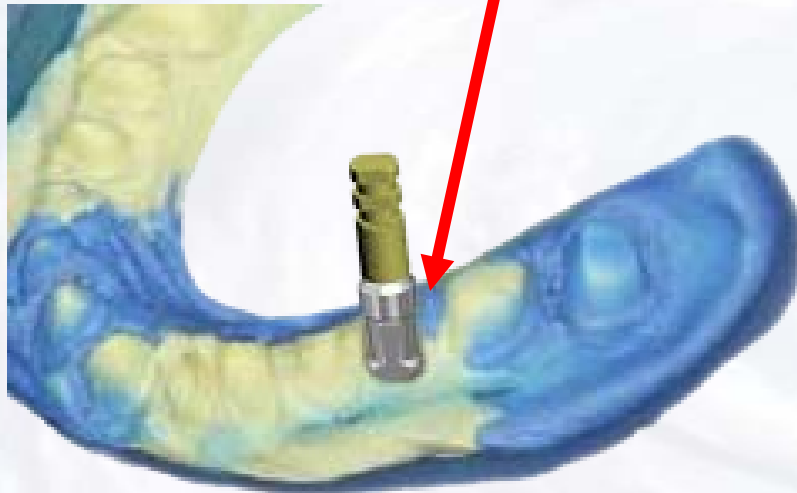
Insert assembled conical abutment / implant level analog into impression.



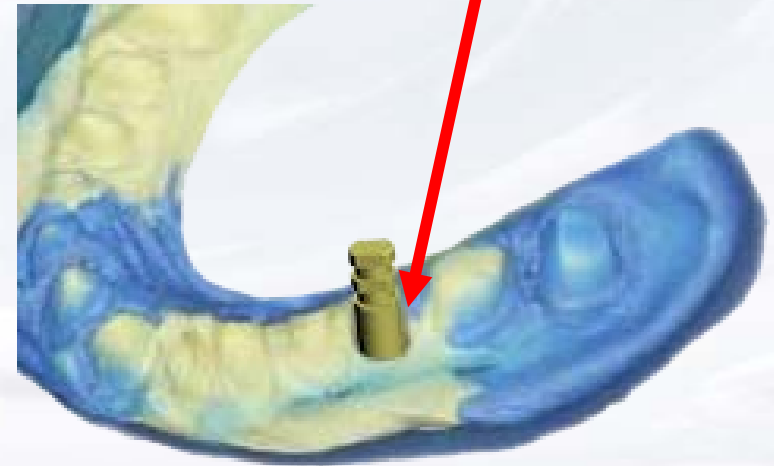
Blue Sky Bio

# Custom Millable Abutment for Trilobe Implant

Make sure to align the flats of conical abutment with the flat within the impression and insert the conical abutment/analog assembly into the impression



Conical Abutment/analog assembly  
inside impression



**Blue Sky Bio**

# Custom Millable Abutment for Trilobe Implant

Apply soft tissue replica material  
around implant level analog



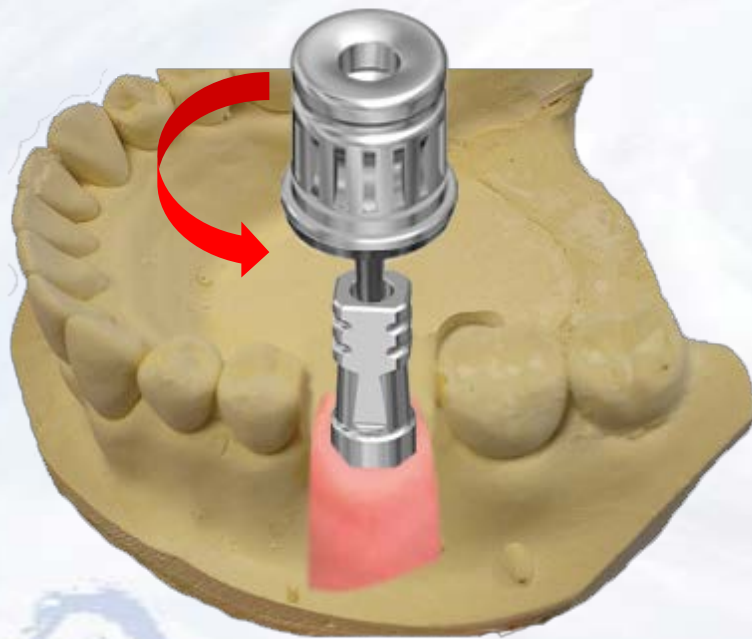
Pour dental stone into impression



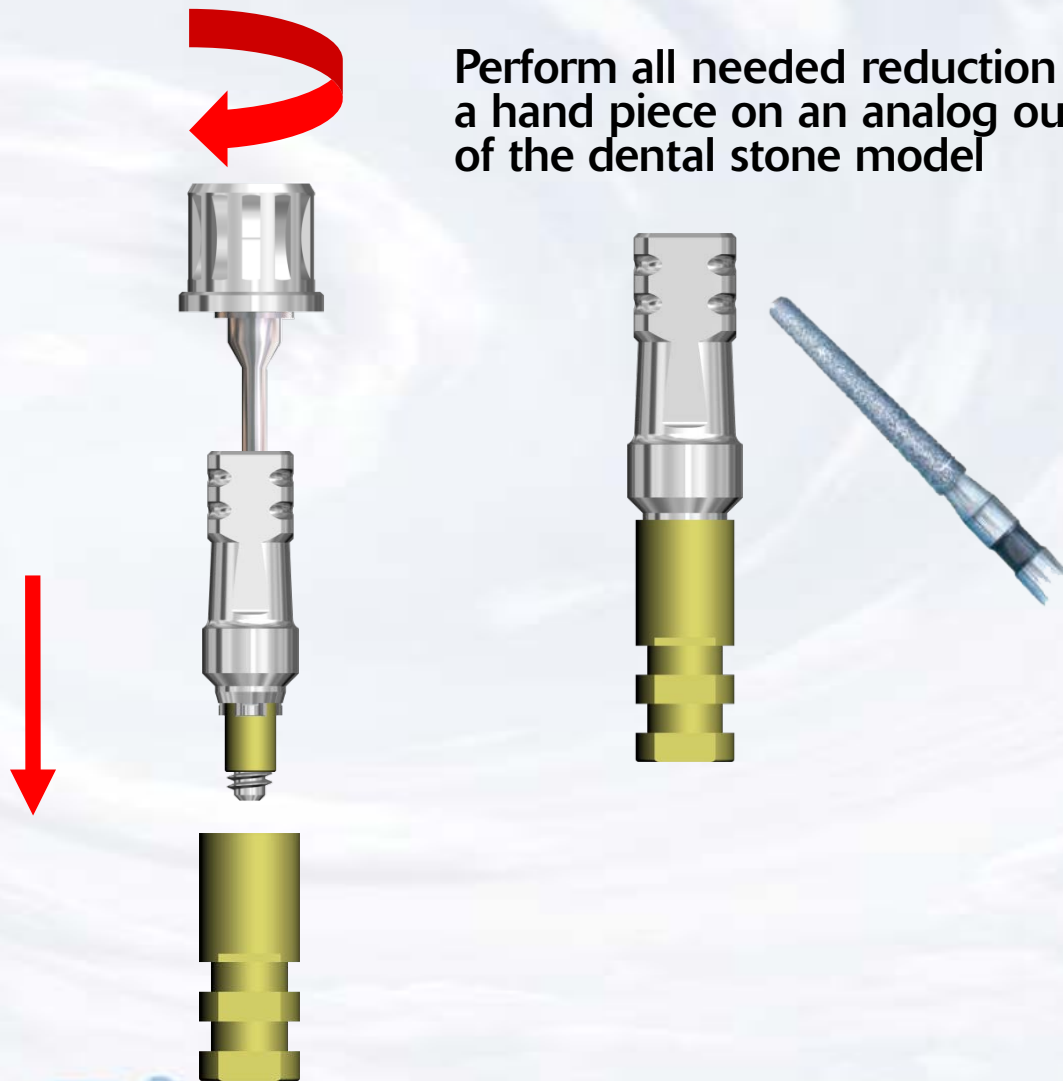
**Blue Sky Bio**

# Custom Millable Abutment for Trilobe Implant

Remove master cast from impression and after marking the areas for reduction on the abutment, remove it from the stone model



Perform all needed reduction with a hand piece on an analog outside of the dental stone model



Blue Sky Bio

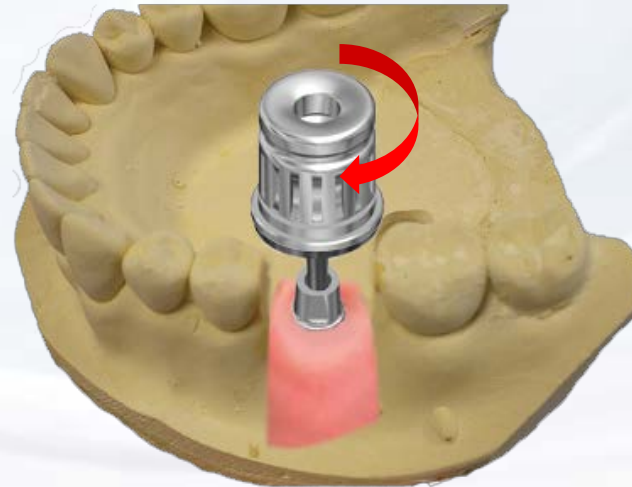


# Custom Millable Abutment for Trilobe Implant

Remove the  
adjusted abutment  
from the analog



Re-insert the customized abutment  
into the model



Blue Sky Bio

# Custom Millable Abutment for Trilobe Implant

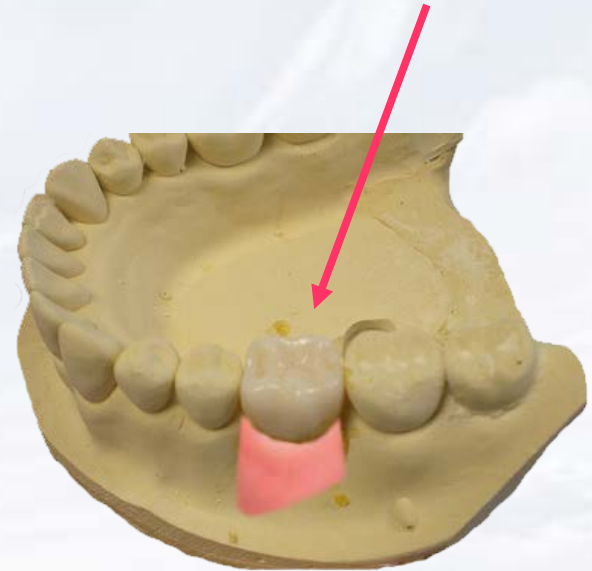
Add die spacer on the abutment and wax up the undercasting directly on the abutment



Cast wax up in usual manner and try in the casting on the abutment

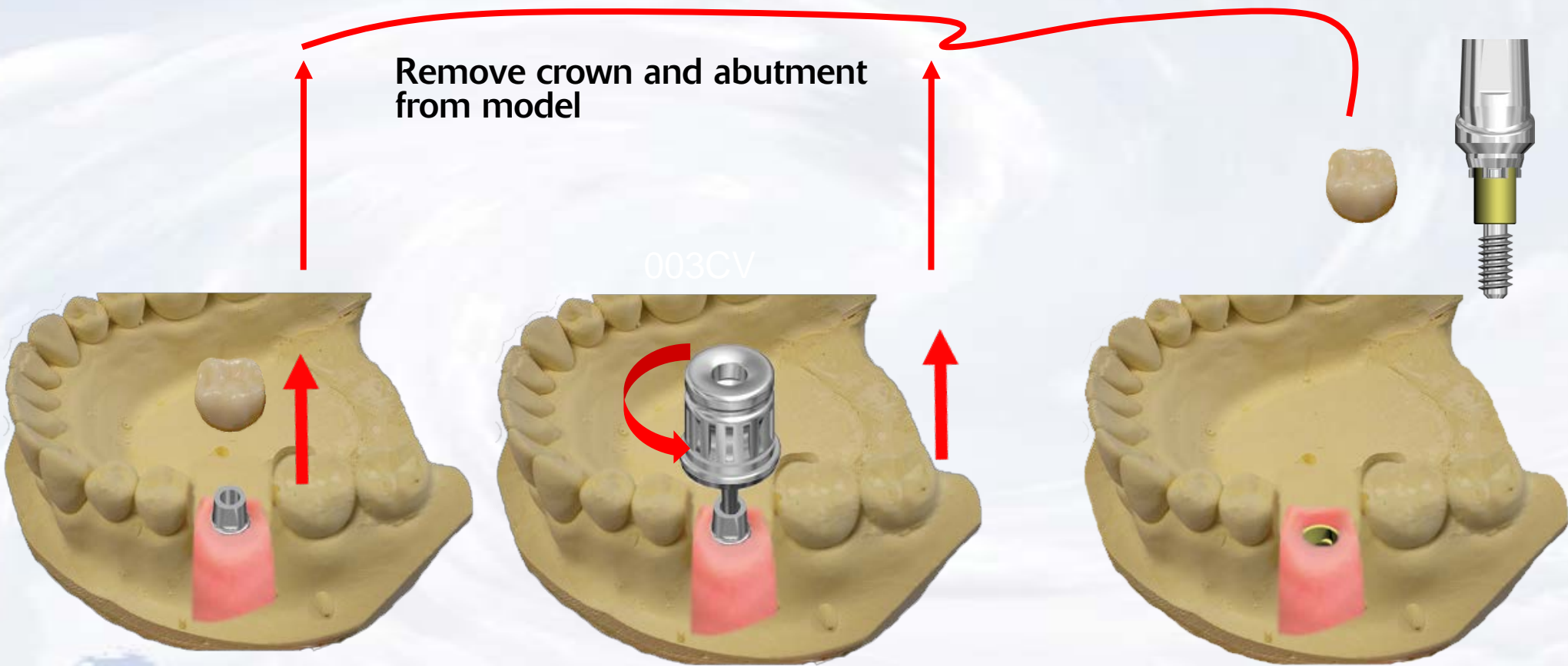


Build and fire the ceramic in the usual manner and finish the restoration



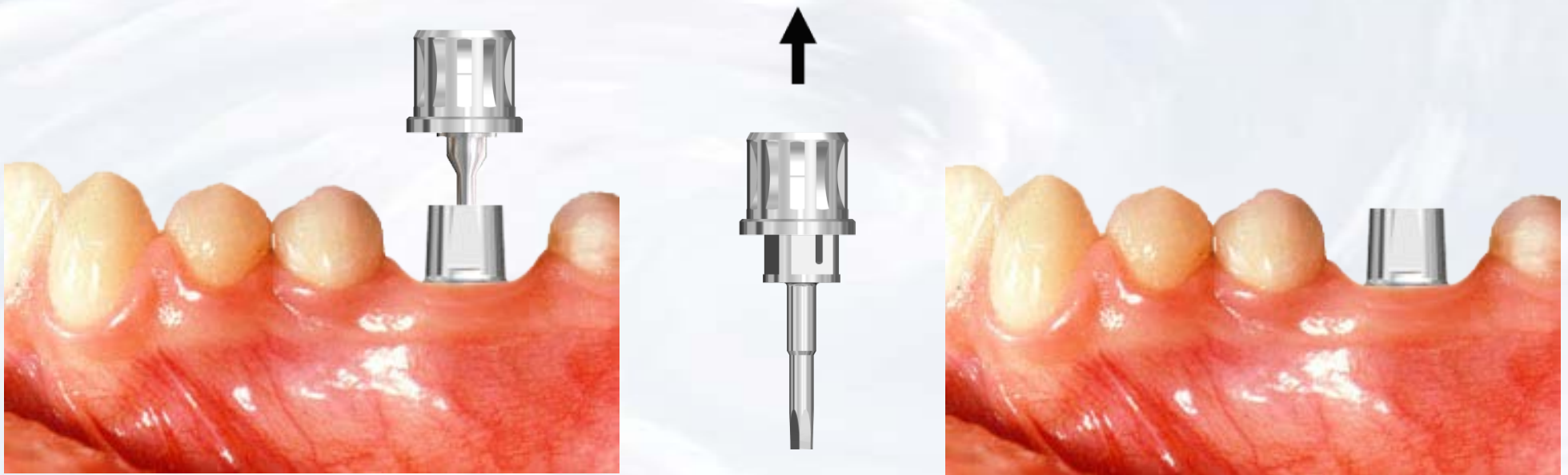
Blue Sky Bio

# Custom Millable Abutment for Trilobe Implant



Blue Sky Bio

# Custom Millable Abutment for Trilobe Implant



Use the screw driver assembly  
to insert the abutment

Separate the screw driver  
assembly from the hex  
driver



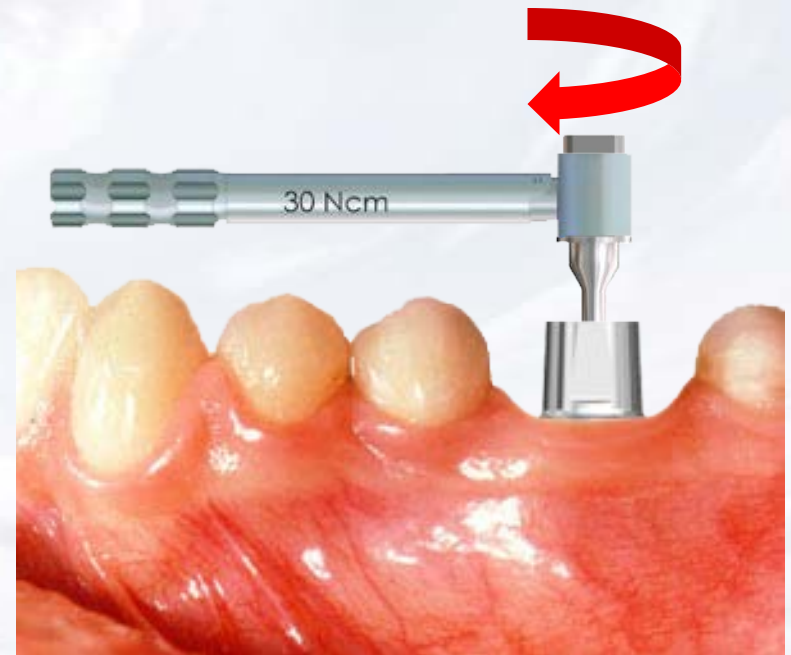
**Blue Sky Bio**

# Custom Millable Abutment for Trilobe Implant

Insert the hex driver within  
the 30 Ncm torque ratchet



Insert driver into the abutment screw  
and turn torque ratchet clockwise until  
torque of 30 Ncm is reached and the  
head of the ratchet releases



**Blue Sky Bio**

# Custom Millable Abutment for Trilobe Implant



Cement restoration on abutment



**Blue Sky Bio**