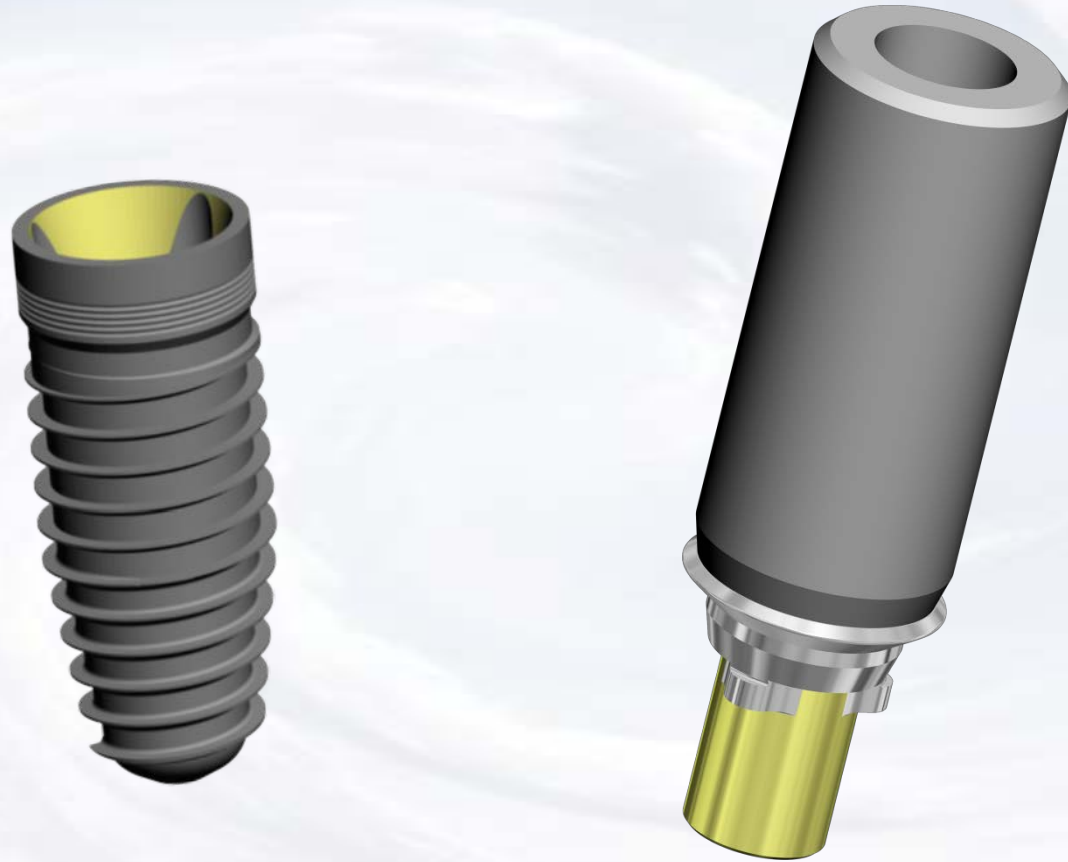


# Trilobe UCLA Abutment



**Blue Sky Bio**

# Trilobe UCLA Abutment



Cover screw in place



Choose matching abutment

## Gold UCLA 3.5 mm



Size	Part #
3.5 Gold UCLA Abutment (including screw)	AUCLAT35G
Additional Abutment Screw, UCLA, Trilobe, 3.5mm	SLN18

## Gold UCLA 4.3 mm



Size	Part #
4.3 Gold UCLA Abutment (including screw)	AUCLAT43G
Additional Abutment Screw, UCLA Trilobe, 4.3mm	SLN20

## Gold UCLA 5.0 mm








Size	Part #
5.0 Gold UCLA Abutment (including screw)	AUCLAT50G
Additional Abutment Screw, UCLA Trilobe, 5.0mm	SLN20

The presentation that follows lists only one combination of parts. Obviously the clinical situation may call for substitution of another part on this slide



# Trilobe UCLA Abutment

	Size	Part #
	.048 Hex Driver Short	SDS048
	.048 Hex Driver Long	SDL048
	Adapter for NB Ratchet	NA
	Instrument Box	PIB
	Trilobe Complete Prosthetic Kit	TCPK

Prosthetic instruments needed



Blue Sky Bio

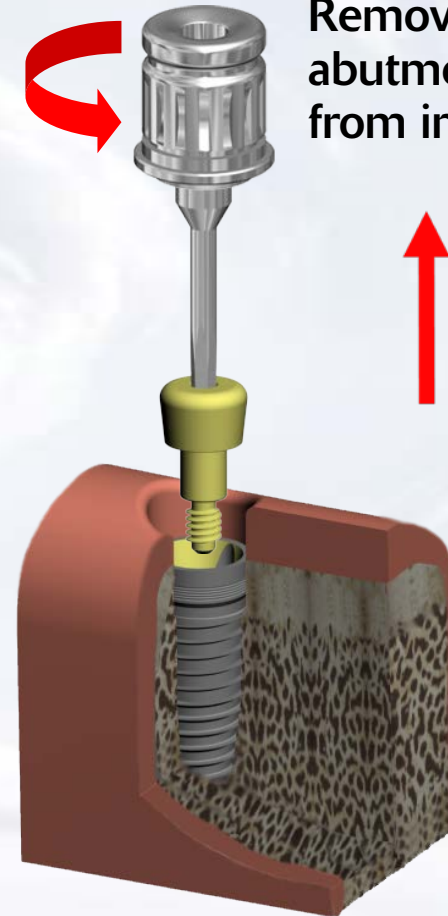
# Trilobe UCLA Abutment

Assemble screw driver with  
Ratchet Adapter

Insert assembled screw driver  
into cover screw



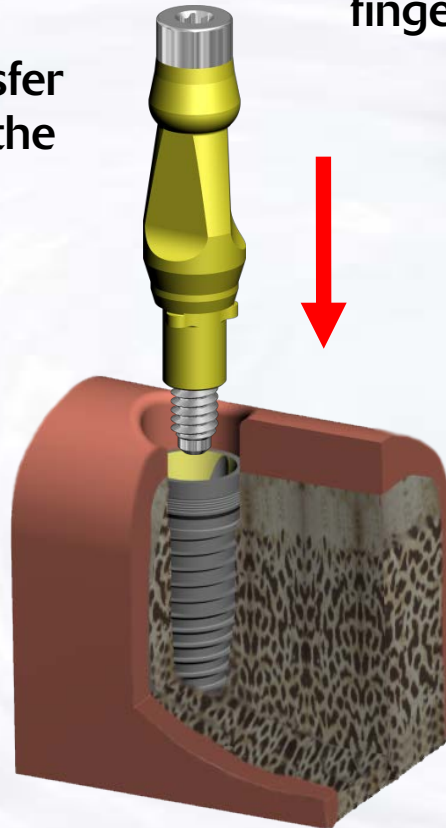
Remove healing  
abutment  
from implant



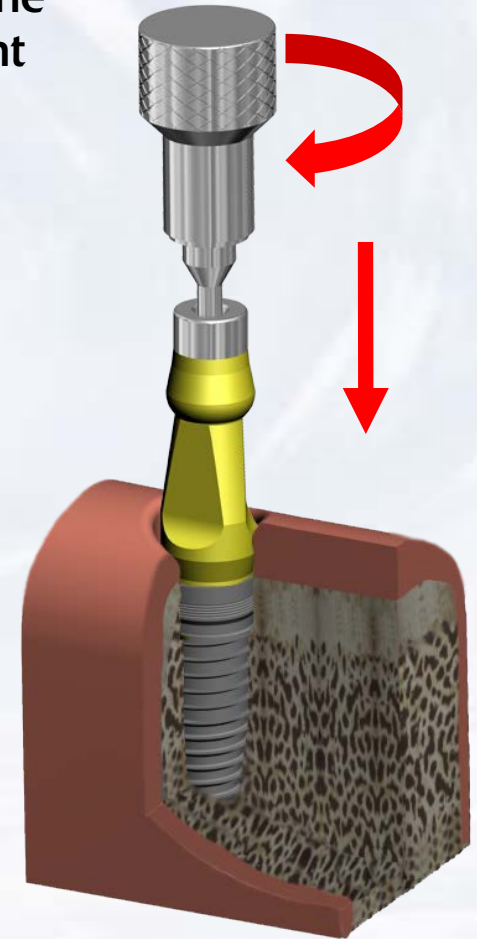
Blue Sky Bio

# Trilobe UCLA Abutment

Insert the Impression Transfer into the implant ensuring the appropriate orientation



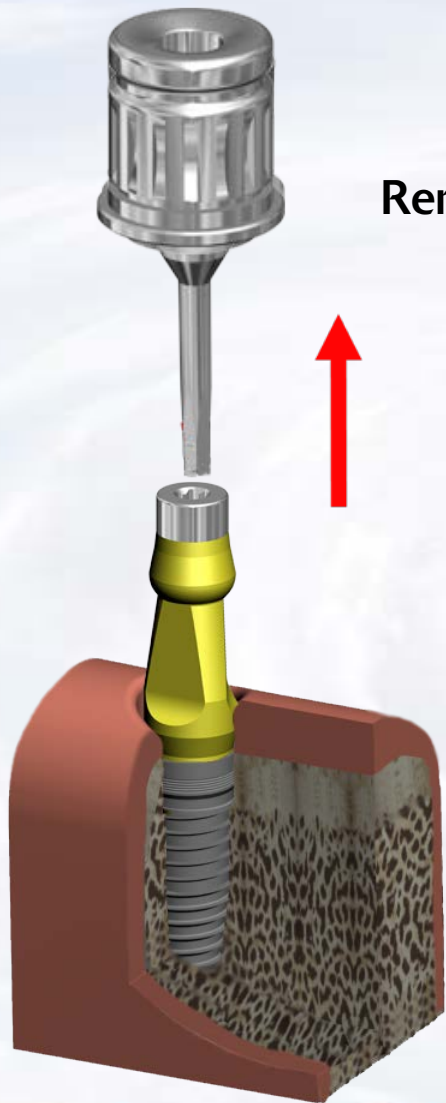
Tighten the screw with the driver assembly with light finger force



Blue Sky Bio



# Trilobe UCLA Abutment



Remove driver



Apply wax to the top of the screw.



Blue Sky Bio

# Trilobe UCLA Abutment

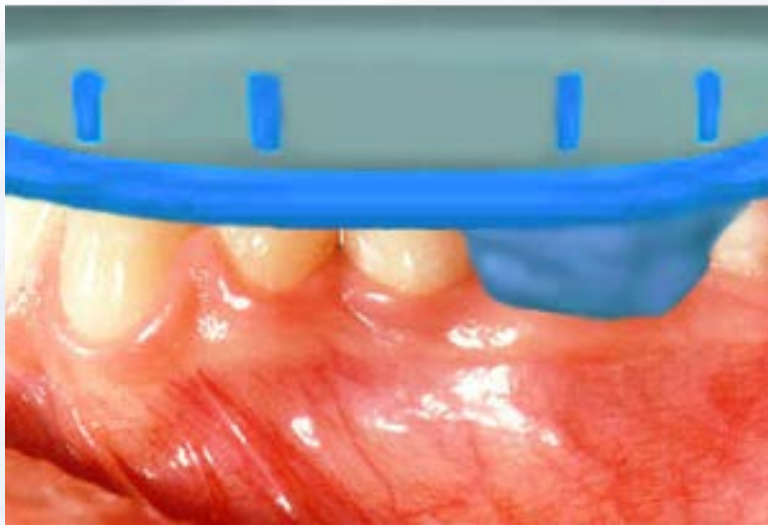


Inject impression material around the abutment

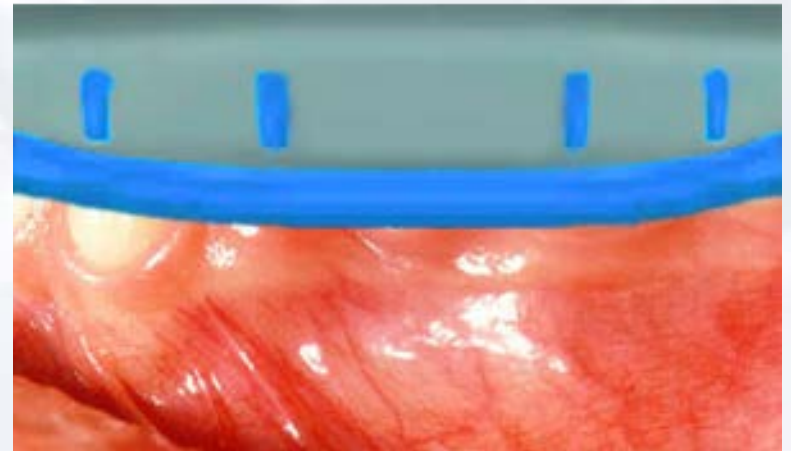


**Blue Sky Bio**

# Trilobe UCLA Abutment



Insert tray with impression material



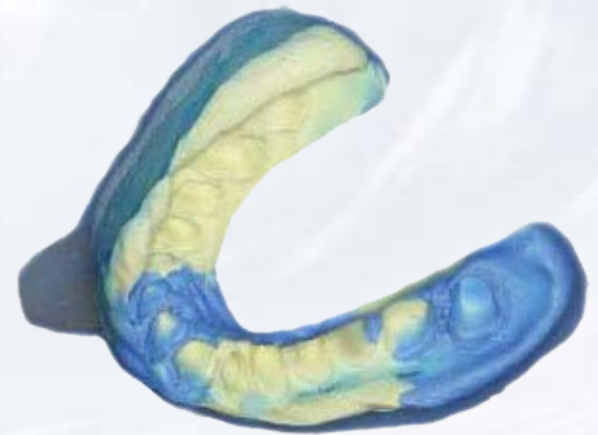
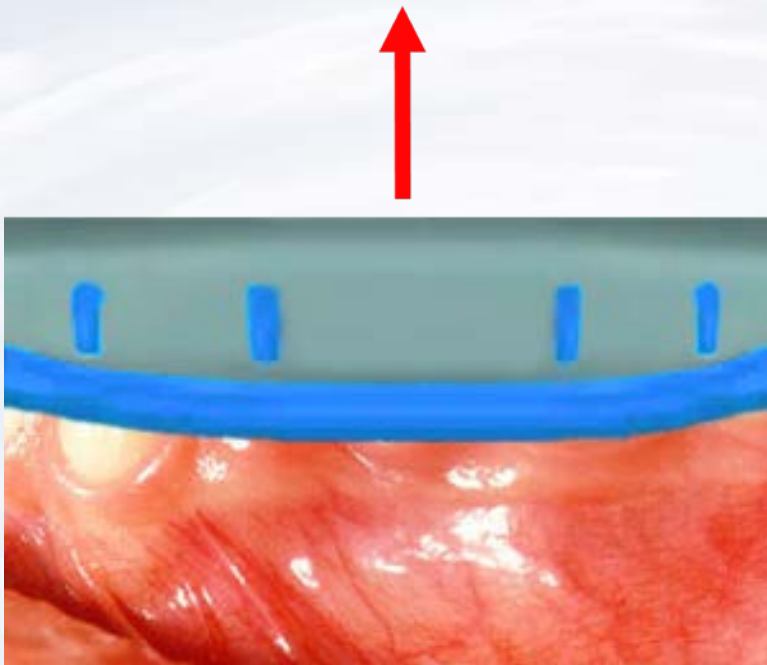
Seat impression to capture dental arch



**Blue Sky Bio**



# Trilobe UCLA Abutment



Remove the impression from the mouth when material has set

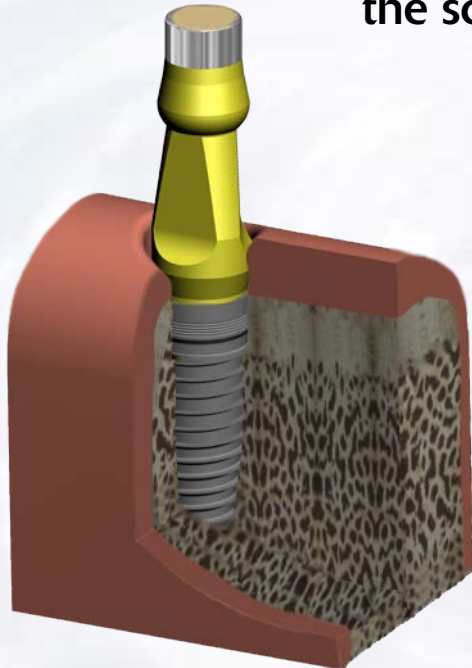


**Blue Sky Bio**

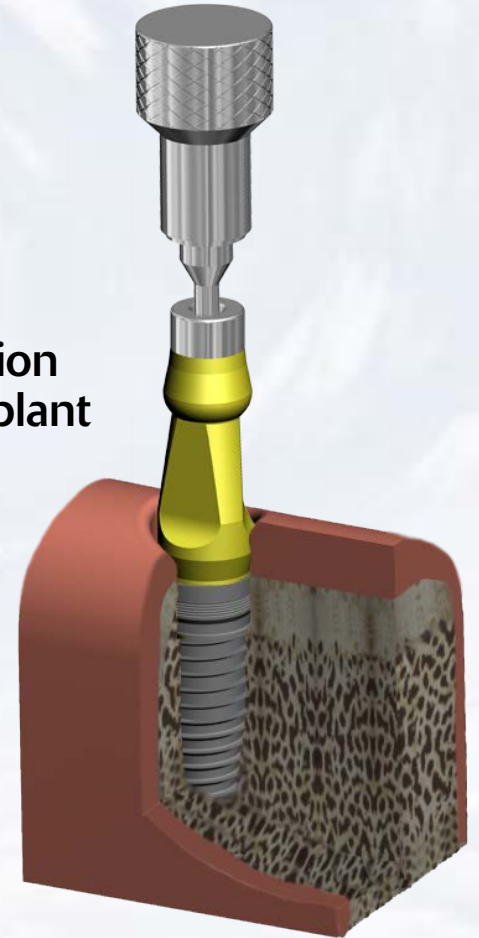
# Trilobe UCLA Abutment



Use a sharp instrument to remove the wax from the screw

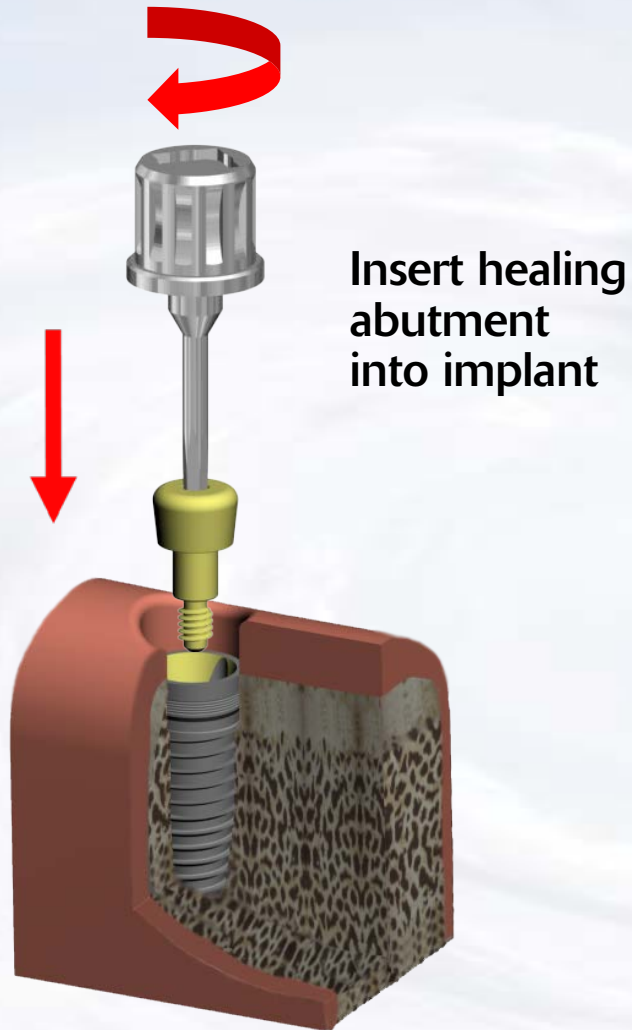


Remove impression transfer from implant



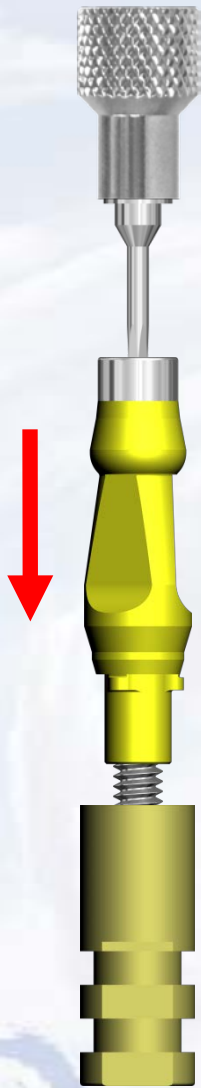
Blue Sky Bio

# Trilobe UCLA Abutment



Blue Sky Bio

# Trilobe UCLA Abutment



Insert driver into  
Impression Transfer



Insert Impression Transfer  
into implant level analog and  
tighten fixation screw with  
finger pressure

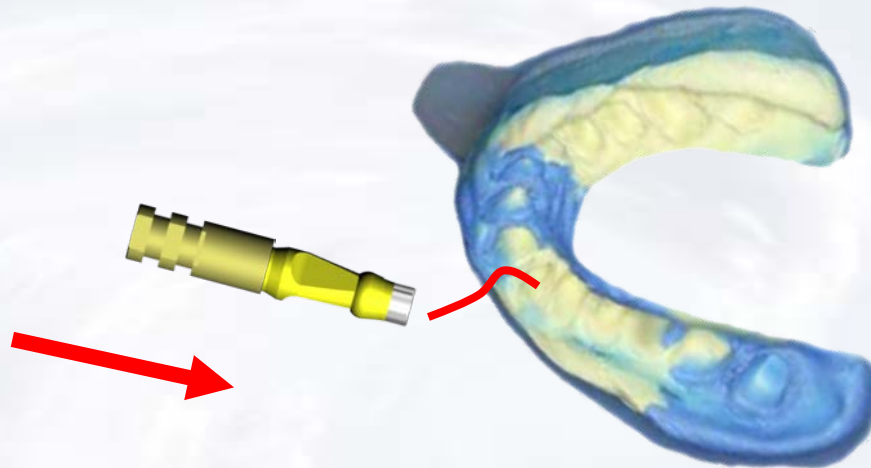


Blue Sky Bio

# Trilobe UCLA Abutment

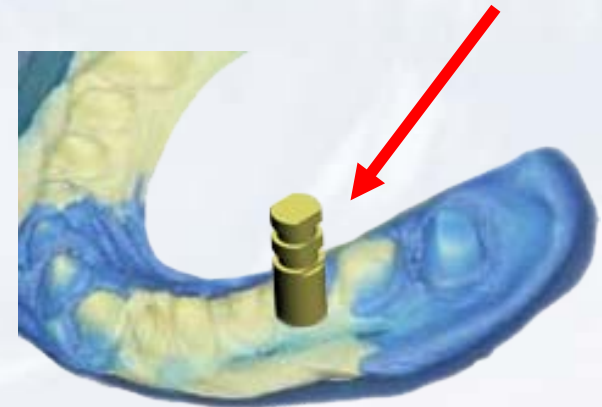


Assembled Impression Transfer with implant level analog



Insert transfer/analog assembly into impression

UCLA Abutment/Analog assembly inside impression





# Trilobe UCLA Abutment

Apply soft tissue  
replica material  
around implant  
level analog



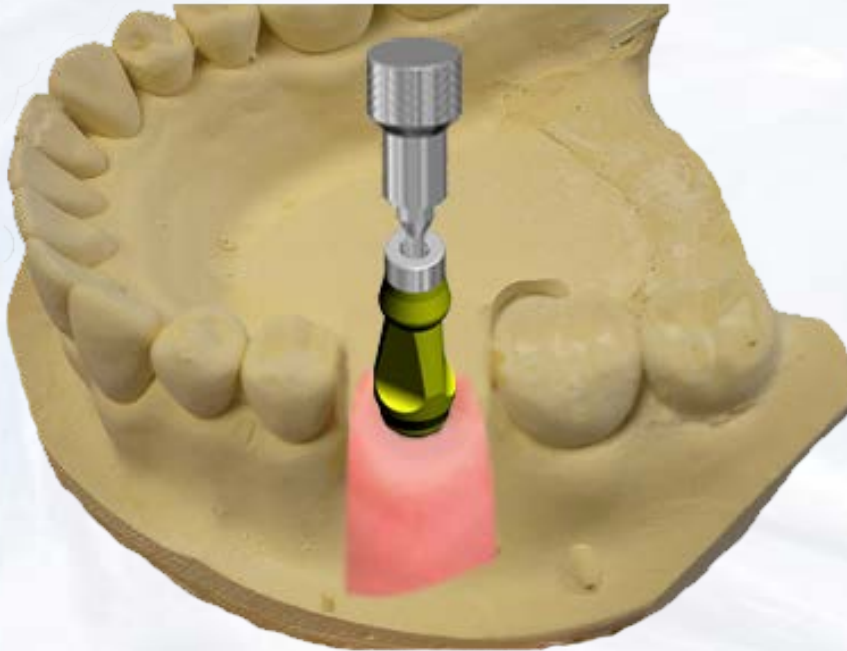
Pour dental stone into impression



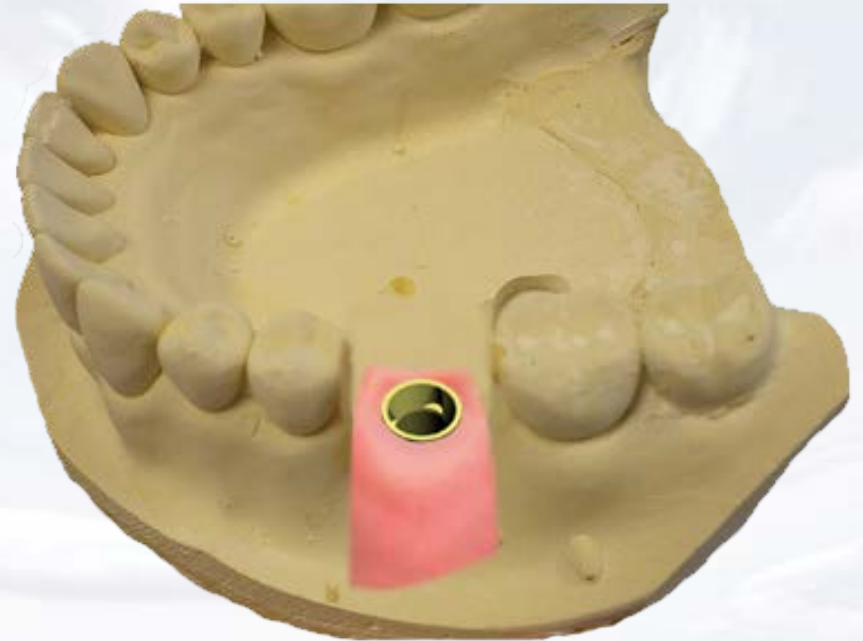
**Blue Sky Bio**

# Trilobe UCLA Abutment

Remove model from impression and loosen the fixation screw of the impression transfer by turning screw driver counter clockwise



Remove impression transfer from analog

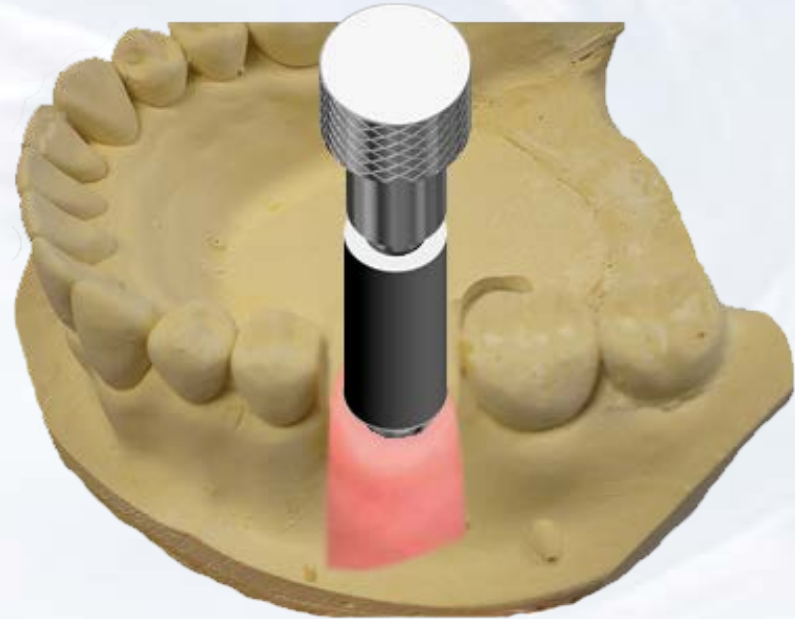


Blue Sky Bio

# Trilobe UCLA Abutment



Insert screw driver assembly into fixation screw in the UCLA abutment



Insert the UCLA abutment into the implant level analog ensuring the appropriate orientation. Hand tighten the fixation screw within the UCLA abutment



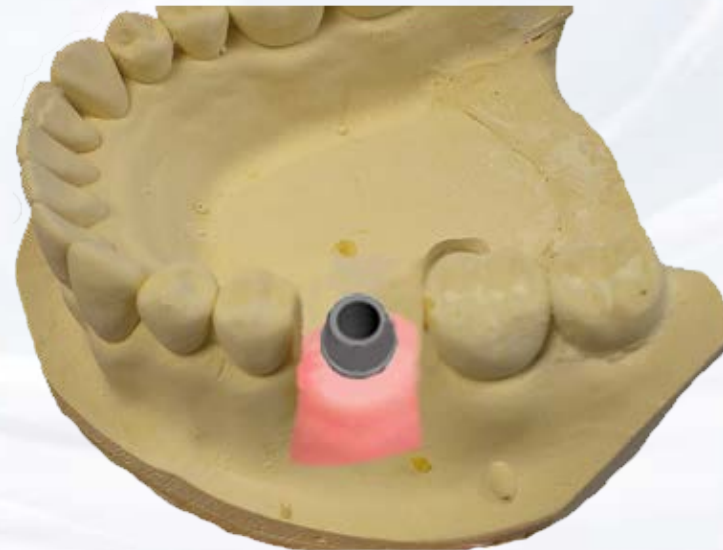
Blue Sky Bio

# Trilobe UCLA Abutment

Create a wax up of the desired shape of the abutment by subtracting or adding to the resin of the UCLA abutment



Cast and finish custom UCLA abutment

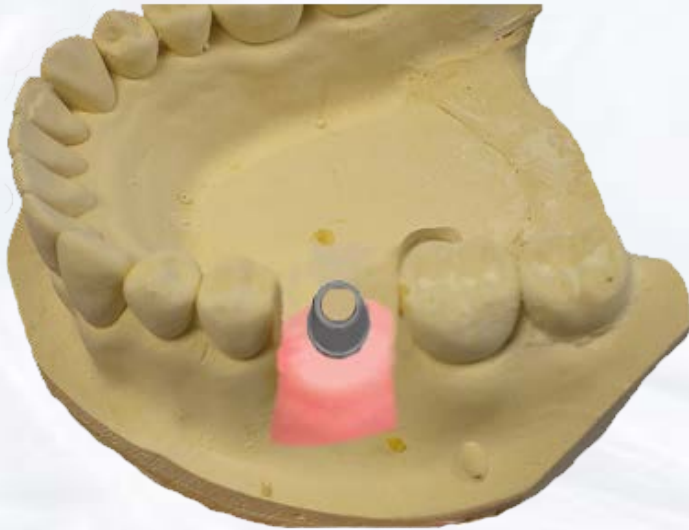


**Blue Sky Bio**



# Trilobe UCLA Abutment

Seal the screw opening of the  
UCLA Abutment



Apply die spacer and wax up  
undercasting on the UCLA Abutment



**Blue Sky Bio**

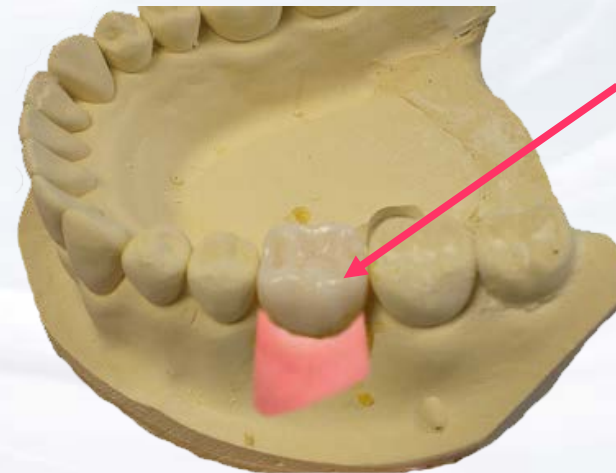


# Trilobe UCLA Abutment

Cast wax up using a conventional technique and insert it in the casting on the stone model



Stack and fire the Ceramic in the usual manner

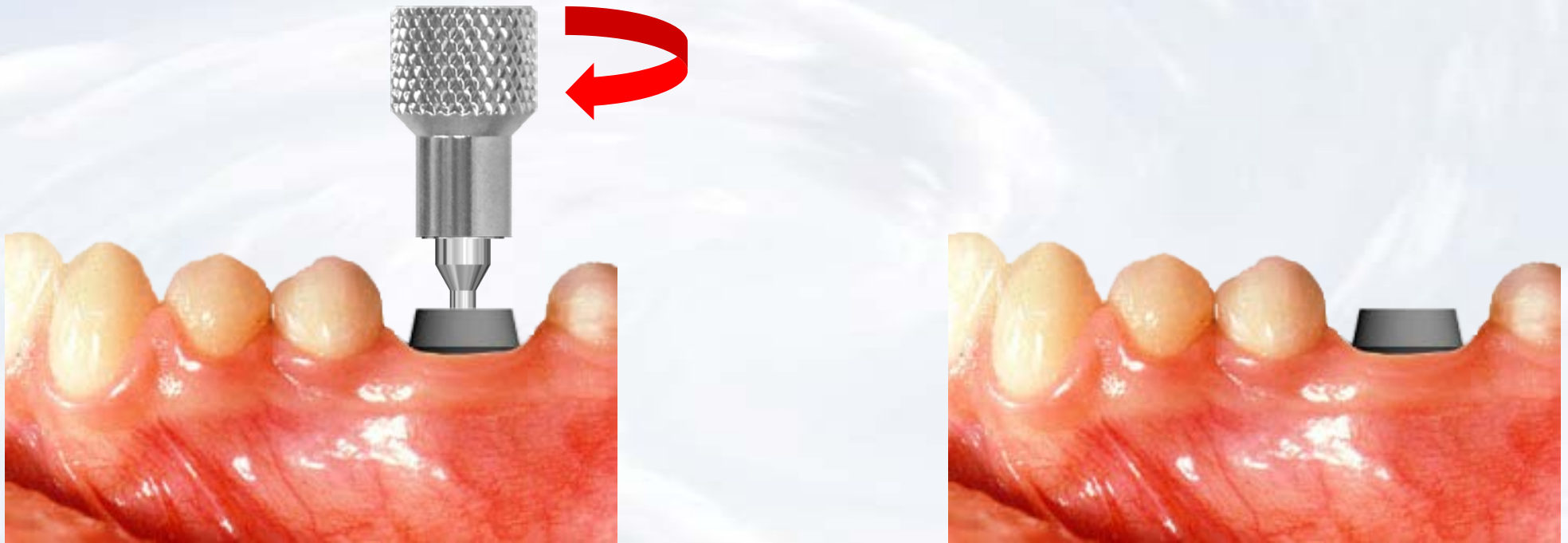


Porcelain crown on model



Blue Sky Bio

# Trilobe UCLA Abutment



Insert the abutment into implant  
orienting it according to the  
instructions from the laboratory and  
tighten with driver



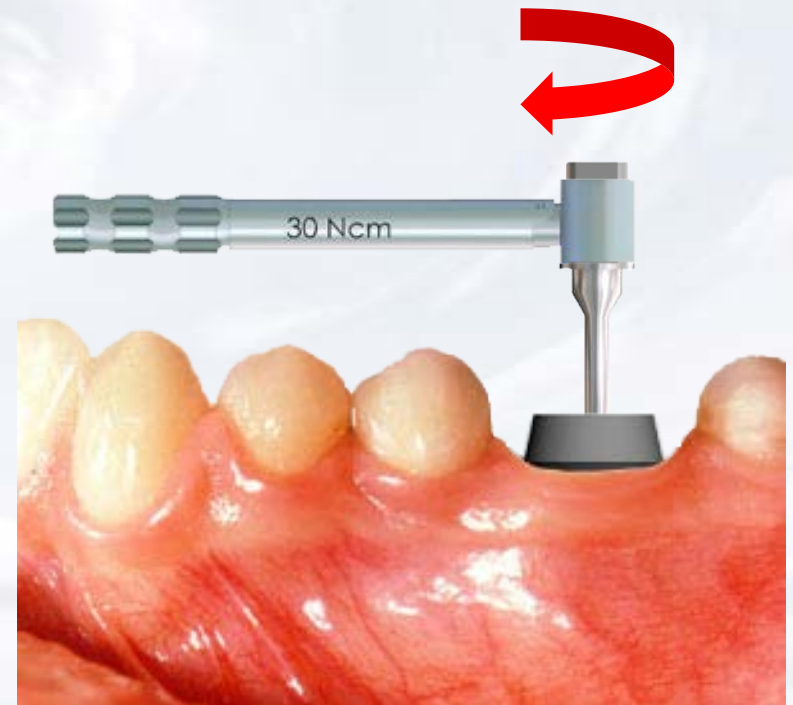
**Blue Sky Bio**

# Trilobe UCLA Abutment

Insert the hex driver into the 30Ncm torque ratchet



Insert driver into the abutment screw tighten the screw until torque of 30 Ncm is reached and the head of the ratchet releases



Blue Sky Bio

# Trilobe UCLA Abutment



Cement restoration on abutment



**Blue Sky Bio**