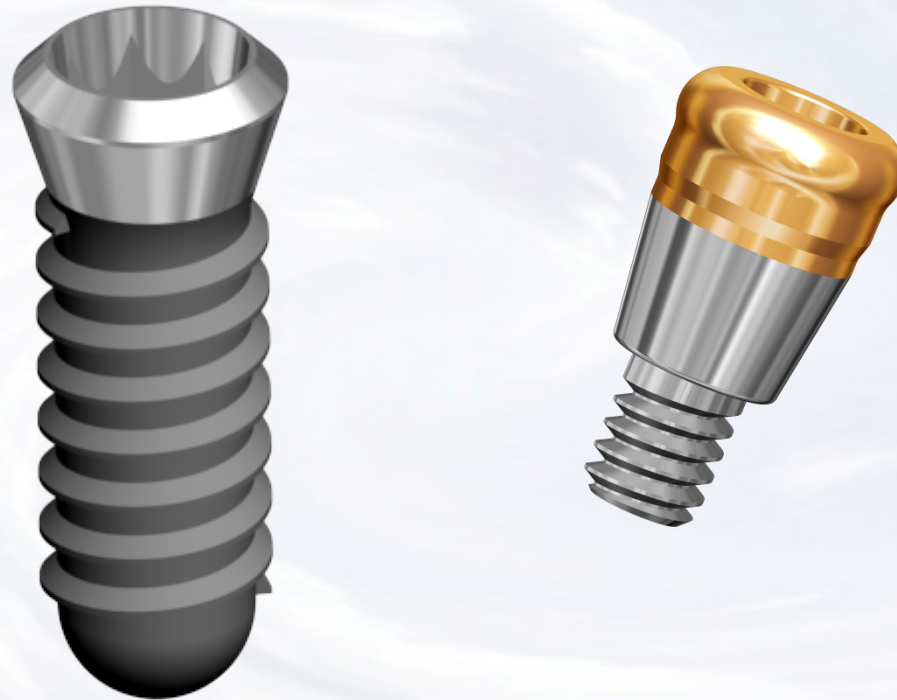
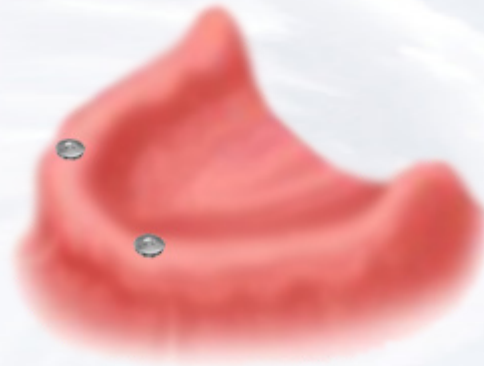


# Overdenture Chairside Technique for Tissue Level Implant



**Blue Sky Bio**

# Overdenture Chairside Technique for Tissue Level Implant








The presentation that follows lists only one combination of parts. Obviously the clinical situation may call for substitution of another part on this slide



**Blue Sky Bio**

# Overdenture Chairside Technique for Tissue Level Implant

	Size	Part #
	Torque/Ratchet Wrench	TR-900-01
	Thumbwheel/ITI Wrench Adapter	ITI-Adapter
	.048 Hex Driver short	SDS048
	.048 Hex Driver long	SDL048
	Insert Placement/Removal Instrument	TFSU

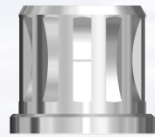
Prosthetic instruments needed



**Blue Sky Bio**

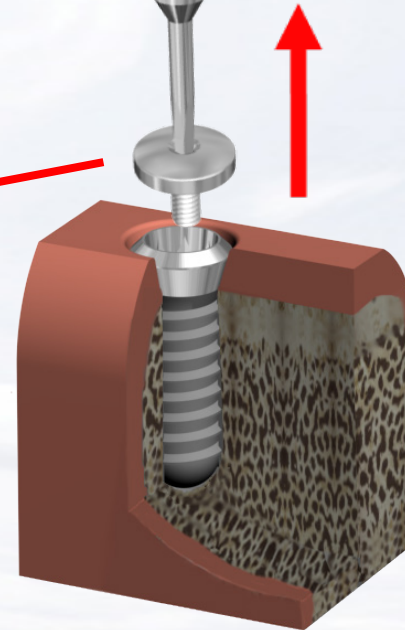
# Overdenture Chairside Technique for Tissue Level Implant

Assemble screw driver with  
ITI - Adapter (thumb-wheel /  
adapter)



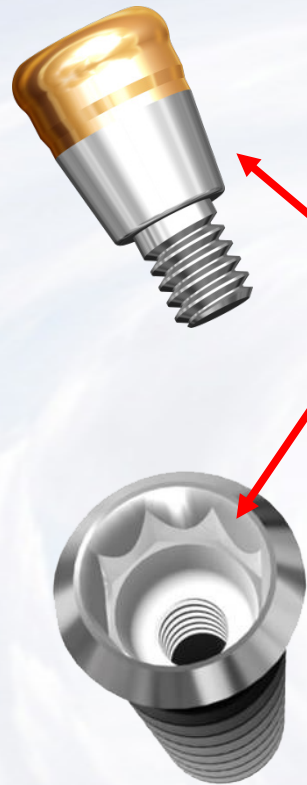
Insert assembled  
screw driver into cover  
screw and turn  
counter clockwise

Remove cover screw  
from implants

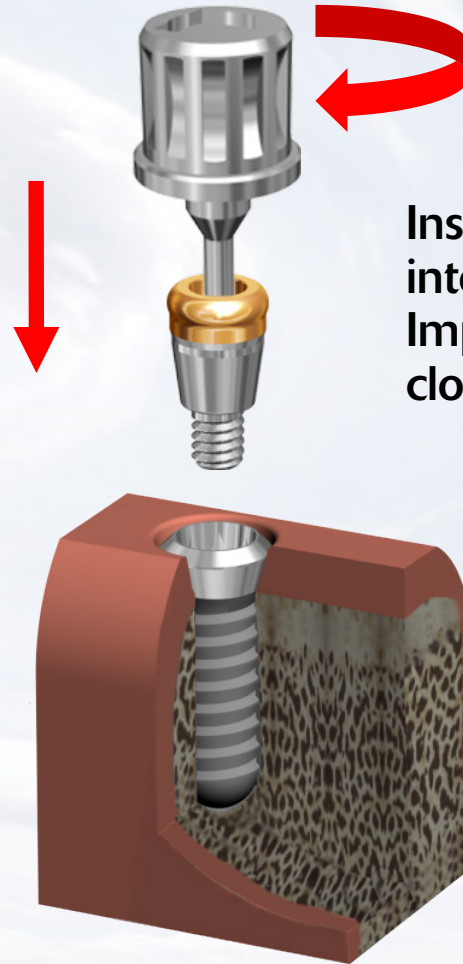


Blue Sky Bio

# Overdenture Chairside Technique for Tissue Level Implant



8 degree Morse taper on the outside of the abutment  
Matches the 8 degree Morse taper within the implant



Insert the abutment into the One Stage Implant and rotate clockwise until snug



Blue Sky Bio

# Overdenture Chairside Technique for Tissue Level Implant

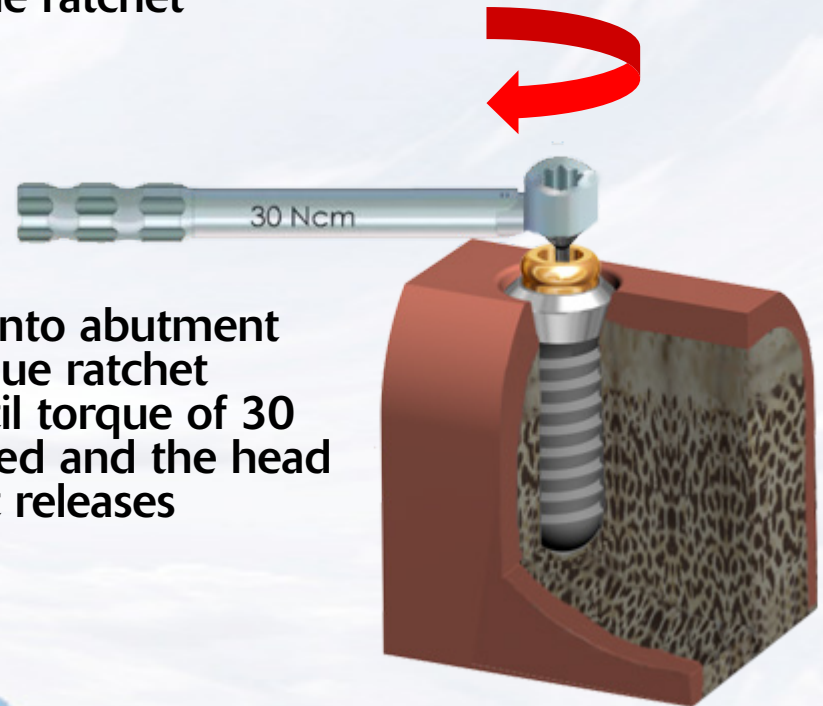
Remove the  
screwdriver  
assembly



Insert the Hex Driver within the  
30Ncm torque ratchet

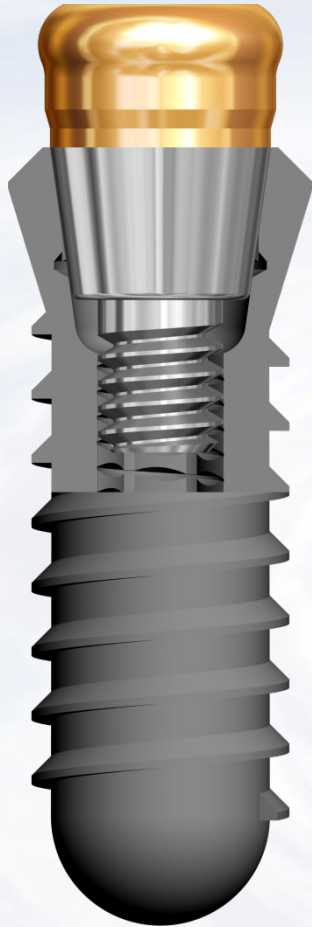


Insert driver into abutment  
and turn torque ratchet  
clockwise until torque of 30  
Ncm is reached and the head  
of the ratchet releases

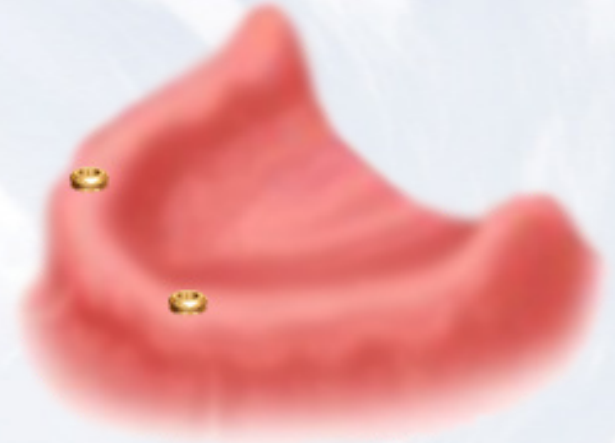


Blue Sky Bio

# Overdenture Chairside Technique for Tissue Level Implant



When the overdenture abutment is screwed into the implant at 30-35 Ncm the Morse taper will lock the abutment in place.

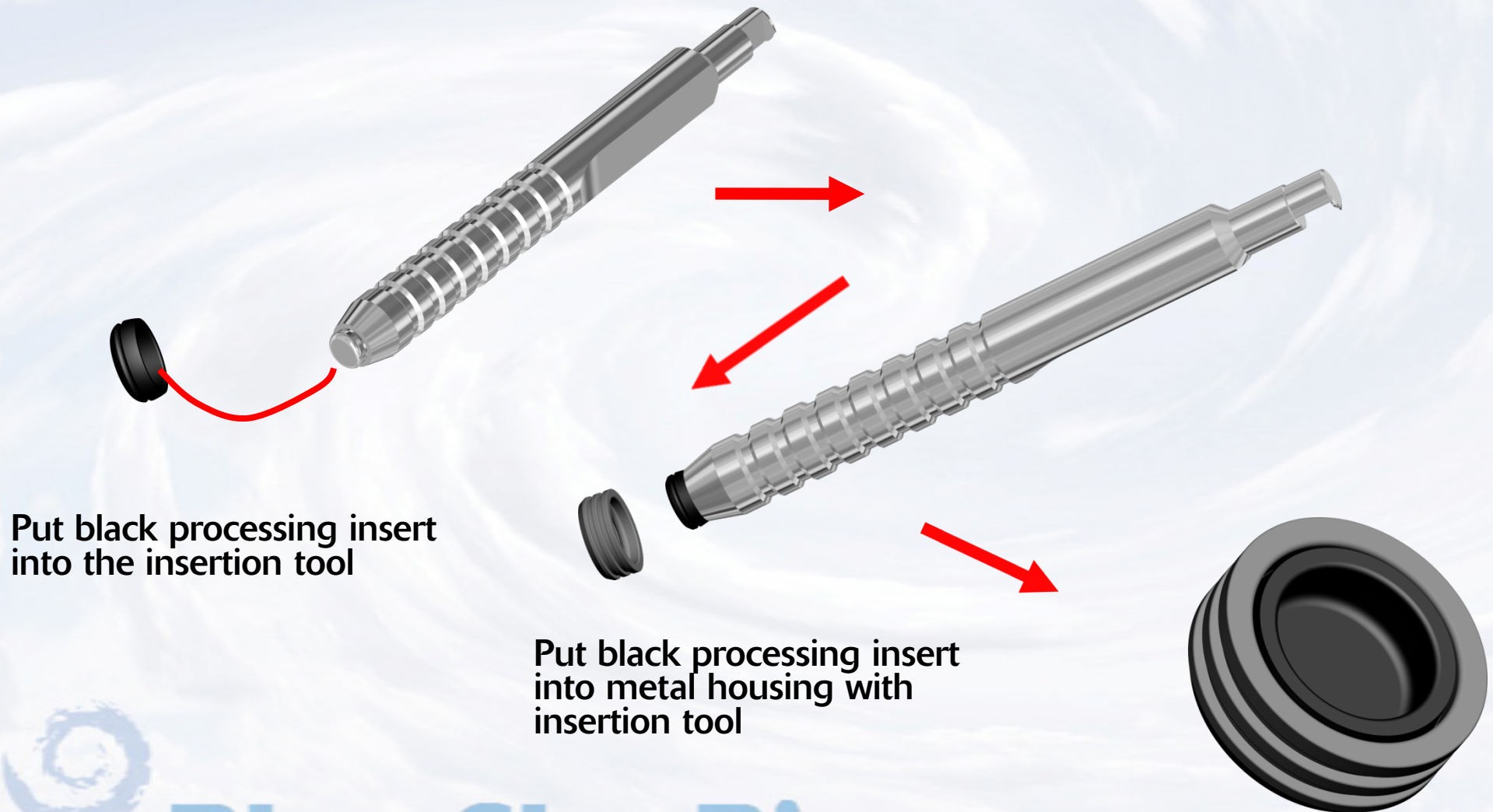


Two abutments in place



**Blue Sky Bio**

# Overdenture Chairside Technique for Tissue Level Implant

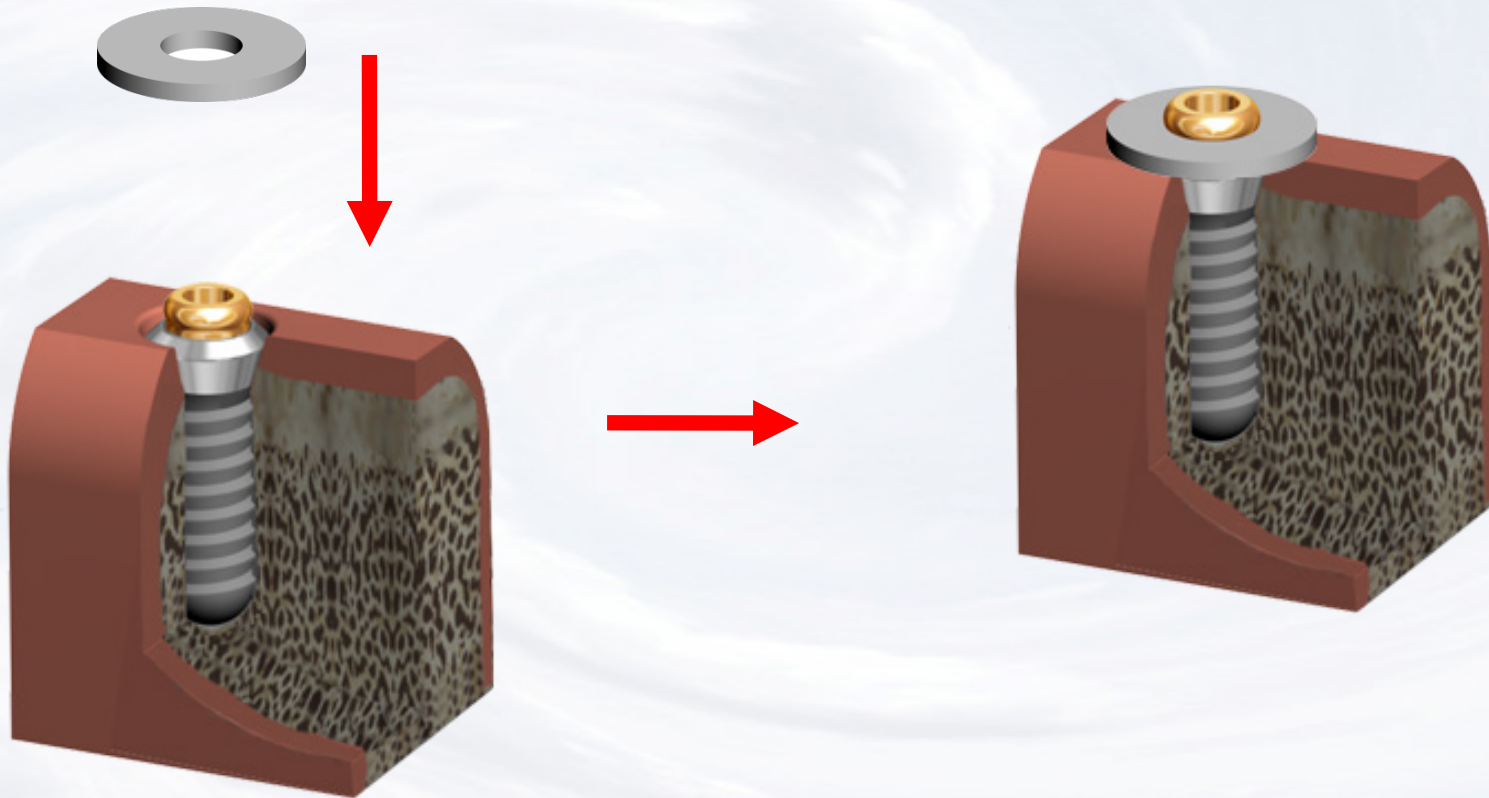


**Blue Sky Bio**



# Overdenture Chairside Technique for Tissue Level Implant

Put silicon blackout  
ring on the abutment

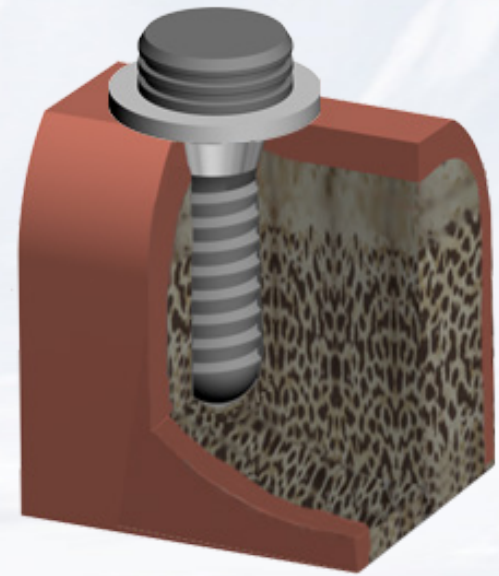
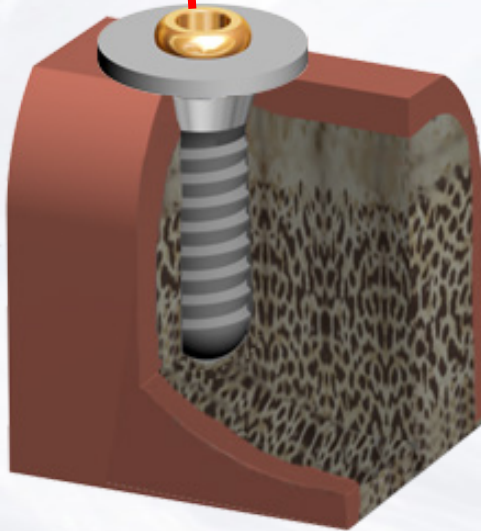


Blue Sky Bio

# Overdenture Chairside Technique for Tissue Level Implant



Snap metal housing with  
processing insert on top  
of the blockout ring on  
the abutment



Blue Sky Bio

# Overdenture Chairside Technique for Tissue Level Implant



Remove enough material from the tissue side of the denture to ensure that it does not interfere with the housings. Typically it is necessary to make the cavity in the denture 2-3mm wider and 1-2mm taller than the housing



Insert denture and ensure that when it is fully seated it does not touch the housings



# Overdenture Chairside Technique for Tissue Level Implant



Insert resin of choice into the  
cavities in the denture



Insert denture again over  
the housings and with  
the patient occluding on  
the denture

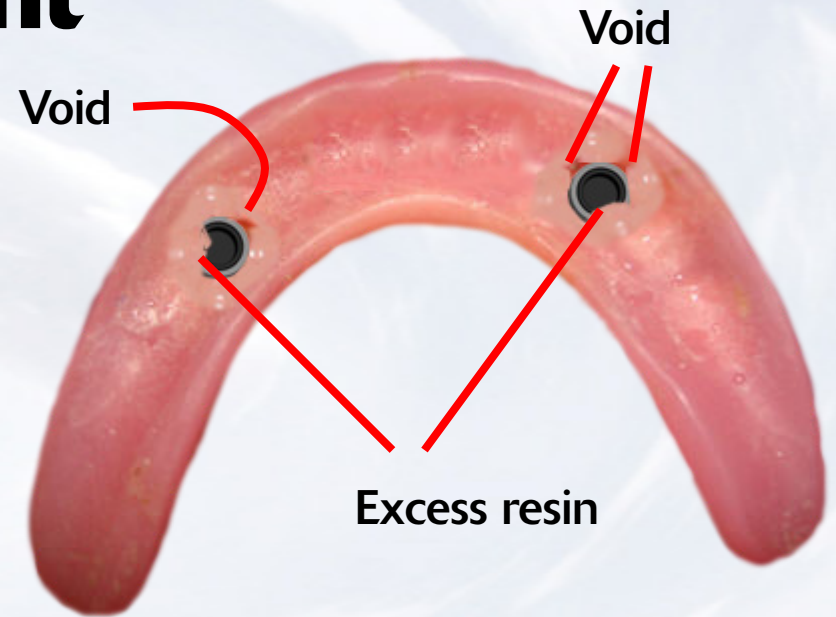


**Blue Sky Bio**

# Overdenture Chairside Technique for Tissue Level Implant



Let resin cure with denture in appropriate occlusion



Remove denture from mouth and fill any voids with resin.  
Trim any excess resin around the housing and on the ridge area



**Blue Sky Bio**

# Overdenture Chairside Technique for Tissue Level Implant



Remove the black processing  
insert with the sharp point of the  
removal instrument



Place the insert with the  
desired retention into the  
housing



**Blue Sky Bio**

# Overdenture Chairside Technique for Tissue Level Implant



Finished prosthesis with  
housings and inserts in place



**Blue Sky Bio**