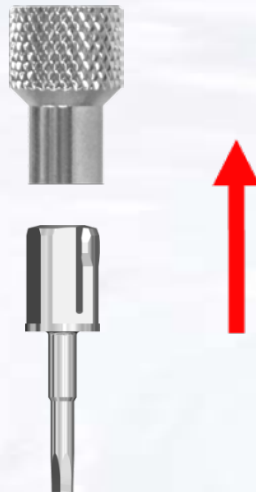
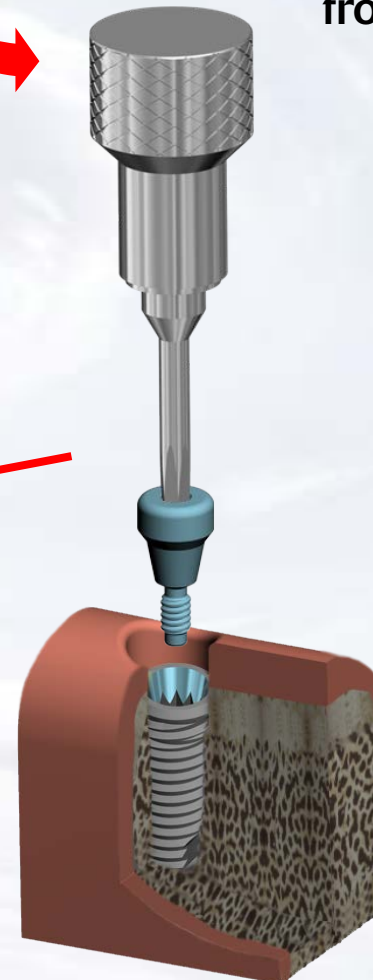


Overdenture Laboratory Technique with Super Snap

Assemble screw driver with
Thumb Knob

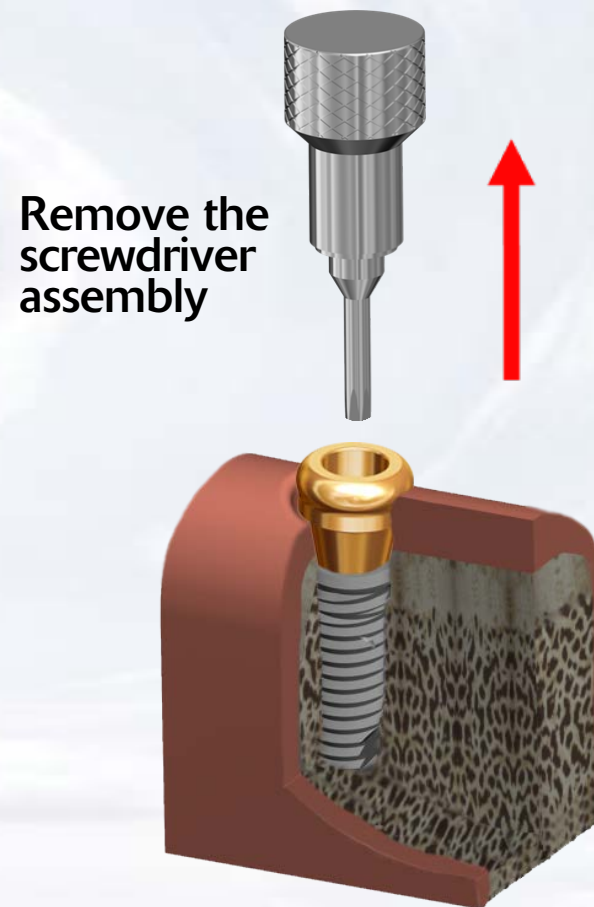
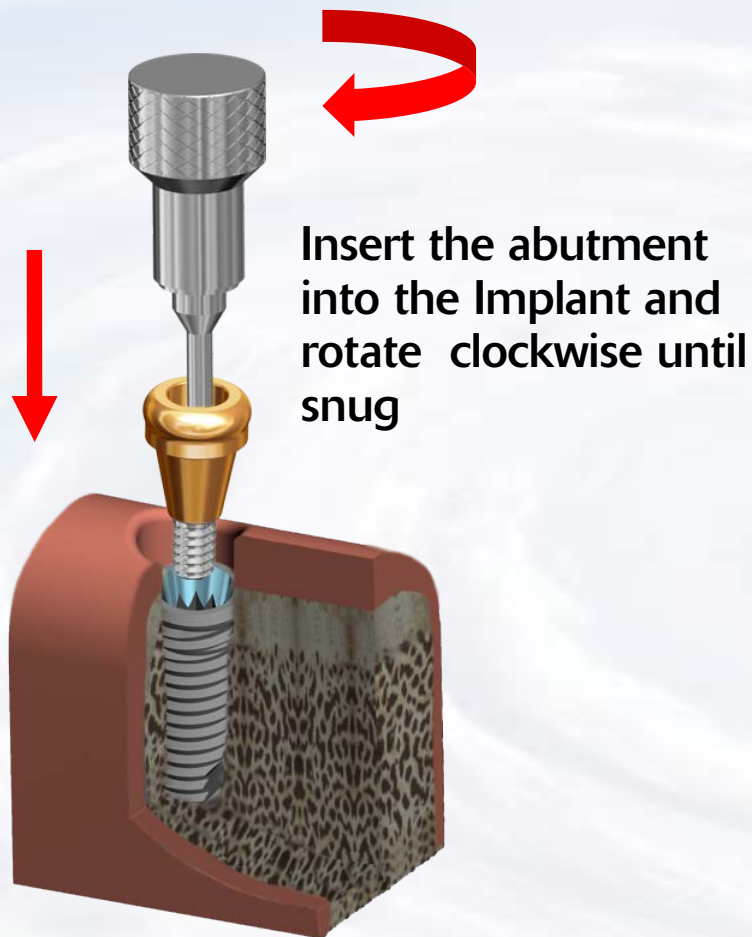


Remove healing abutment
from implant



Blue Sky Bio

Overdenture Laboratory Technique with Super Snap

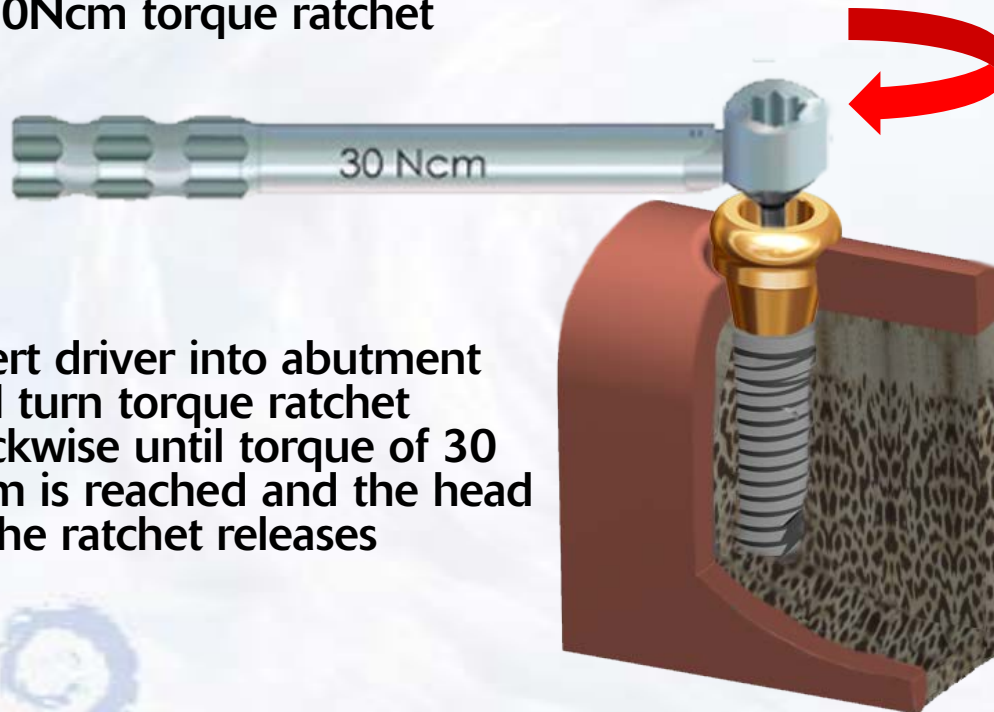


Blue Sky Bio

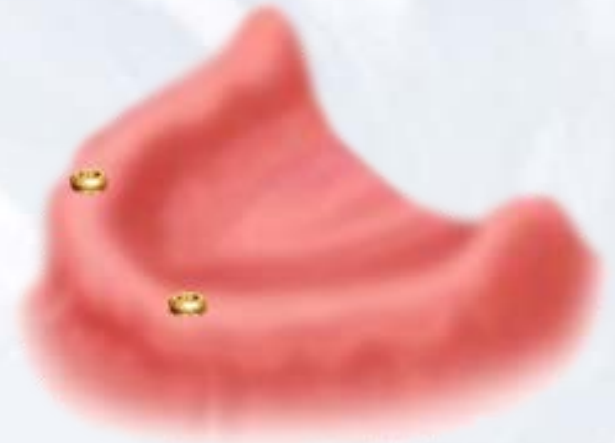
Overdenture Laboratory Technique with Super Snap



Insert the Hex Driver within the
30Ncm torque ratchet



Insert driver into abutment
and turn torque ratchet
clockwise until torque of 30
Ncm is reached and the head
of the ratchet releases

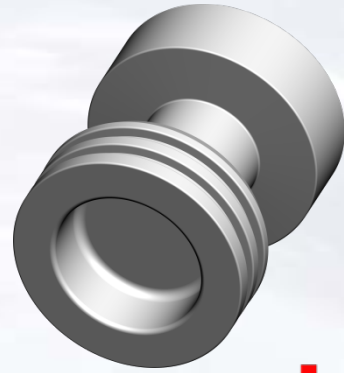


Abutments in
place

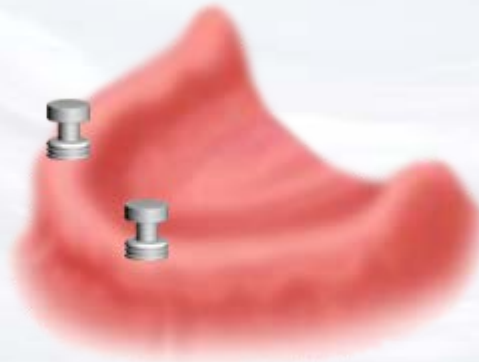


Blue Sky Bio

Overdenture Laboratory Technique with Super Snap

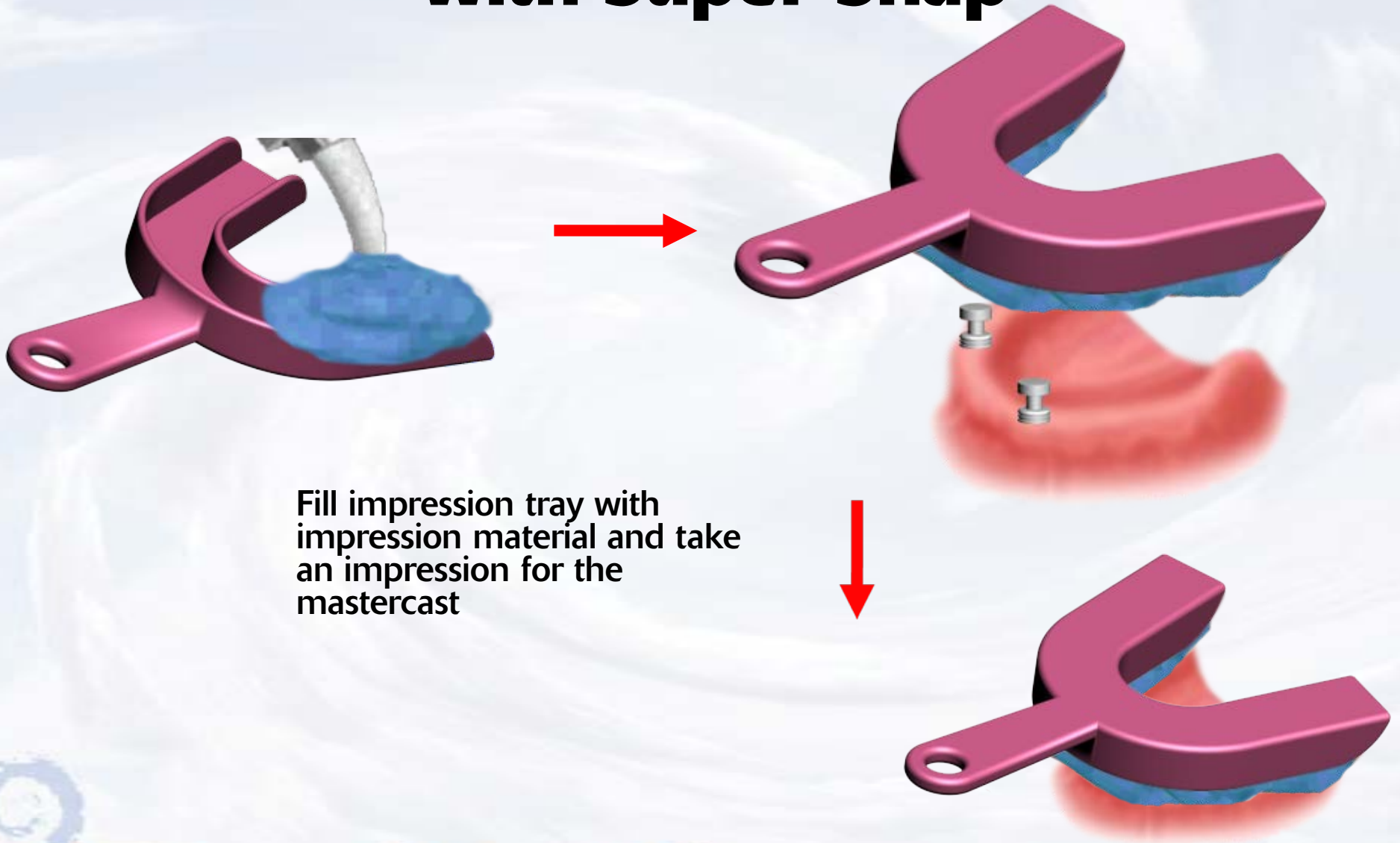


Snap impression transfer
on the abutments



Blue Sky Bio

Overdenture Laboratory Technique with Super Snap



Blue Sky Bio

Overdenture Laboratory Technique with Super Snap



After impression material has set remove impression from mouth picking up the impression transfers

Snap analogs into the impression transfers



Blue Sky Bio

Overdenture Laboratory Technique with Super Snap



Pour impression with model
stone and make master cast
with analogs in place



Blue Sky Bio

Overdenture Laboratory Technique with Super Snap



Put yellow insert on the
analog



Blue Sky Bio

Overdenture Laboratory Technique with Super Snap

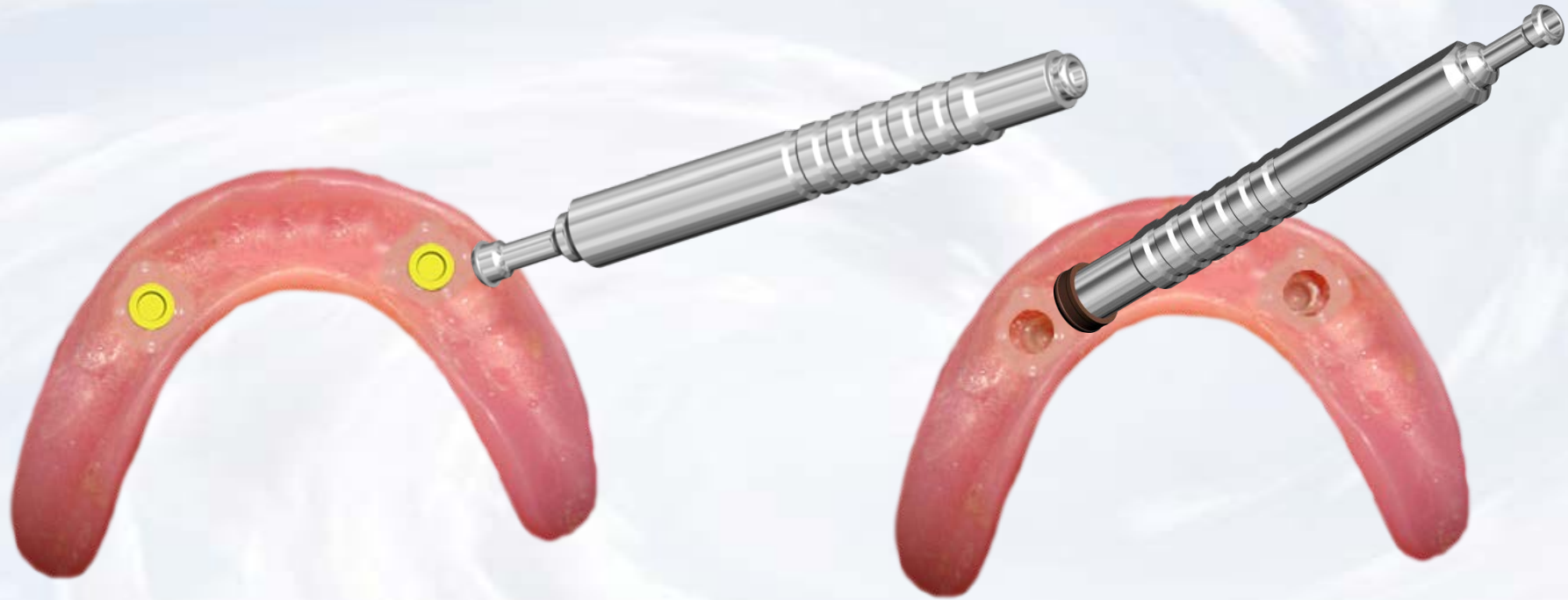


Process the denture



Blue Sky Bio

Overdenture Laboratory Technique with Super Snap (Optional)



Remove the insert you want to change with the sharp point of the removal instrument

Place the insert with the desired retention into the denture with the opposite side of the removal instrument



Blue Sky Bio